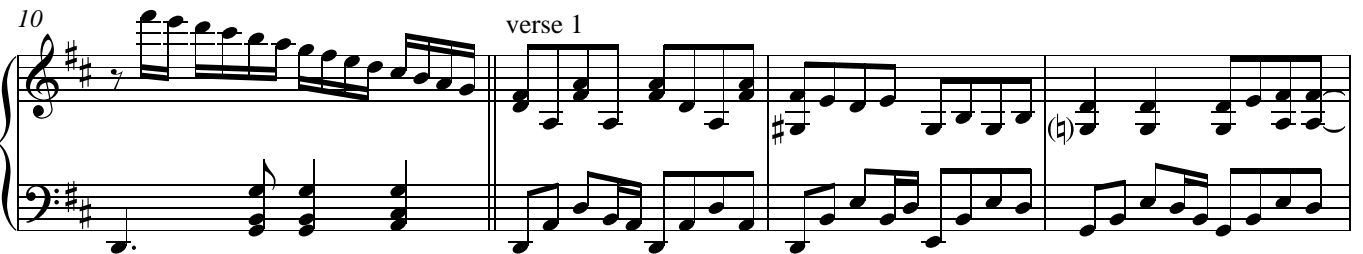
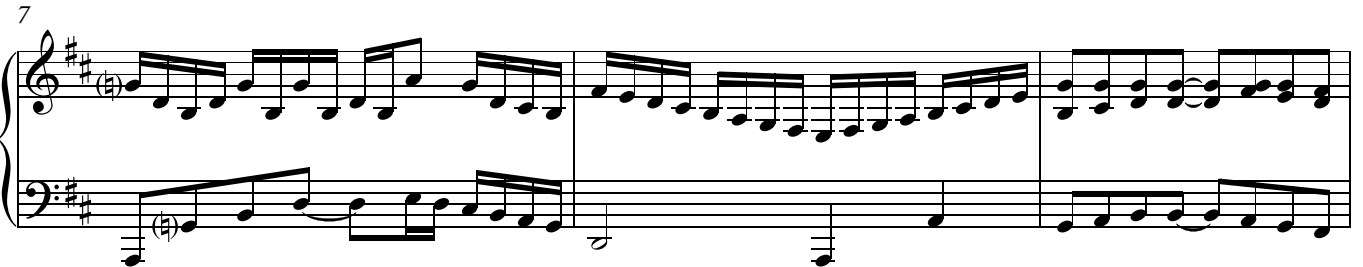
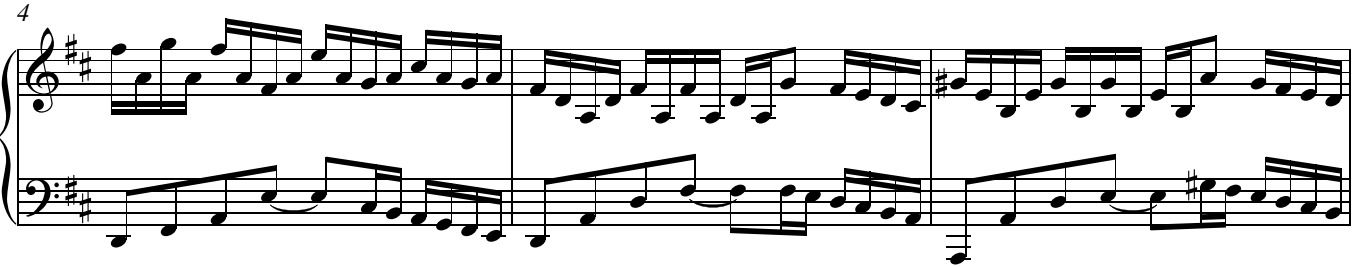
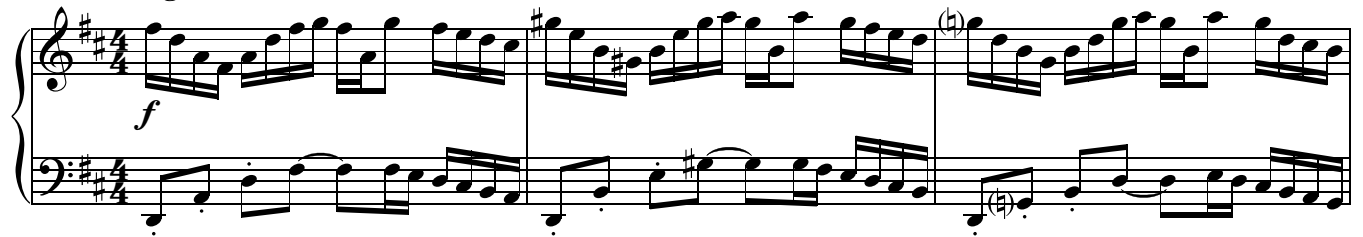


I Don't Have A Care In The World

Daniel Léo Simpson
Piano Version
August 31, 1980
Valley Farms, AZ

Allegro molto ♩=144



22

Measures 22-25 of a piano solo. The key signature is two sharps (F# and C#). The melody in the right hand features a series of eighth and sixteenth notes, with some chords. The bass line consists of a steady eighth-note accompaniment. Measure 25 includes a trill in the right hand.

26

Measures 26-29 of a piano solo. The melody continues with eighth and sixteenth notes. The bass line remains a steady eighth-note accompaniment.

30

Measures 30-33 of a piano solo. The melody features some chords and eighth notes. The bass line continues with eighth notes, including a trill in measure 33.

34

Measures 34-37 of a piano solo. The melody is more active with sixteenth notes. The bass line continues with eighth notes.

38

Measures 38-41 of a piano solo. The melody features some chords and eighth notes. The bass line continues with eighth notes.

42

Measures 42-45 of a piano solo. The melody features some chords and eighth notes. The bass line continues with eighth notes, including a trill in measure 45.

46

47

48

49

50

51

52

53

54

55

56

57

58

59

60

61

62

63

ff

64

65

66

Measures 66-68 of a piano solo in D major. The right hand features a melodic line with eighth and sixteenth notes, while the left hand plays a steady eighth-note accompaniment. Measure 68 includes a whole-note chord in the right hand.

69

Measures 69-71. Measure 69 begins with a key signature change to D minor, indicated by a flat over the F# in the treble clef. The right hand continues with a melodic line, and the left hand maintains the eighth-note accompaniment.

72

Measures 72-74. Measure 72 starts with a whole-note chord in the right hand. The right hand plays a melodic line, and the left hand continues the eighth-note accompaniment.

75

Measures 75-77. Measure 75 includes a whole-note chord in the right hand. Measure 77 features a key signature change back to D major, indicated by a sharp over the F in the treble clef. The right hand plays a melodic line, and the left hand continues the eighth-note accompaniment.

78

Measures 78-79. Measure 78 includes a key signature change to D minor, indicated by a flat over the F# in the treble clef. The right hand plays a melodic line, and the left hand continues the eighth-note accompaniment.

80

Measures 80-82. Measure 80 features a melodic line in the right hand and eighth-note accompaniment in the left hand. Measure 81 includes a whole-note chord in the right hand. Measure 82 concludes with a final whole-note chord in both hands.