

F. Chopin

Op. 28

B. C. Prelude

traduis pour le Violoncelle

avec accomp. de Piano

par Aug. Franckhauer



Breitkopf et Härtel

F. Chopin Op. 25 Prélude

Lento assai

Violoncelle

sotto voce

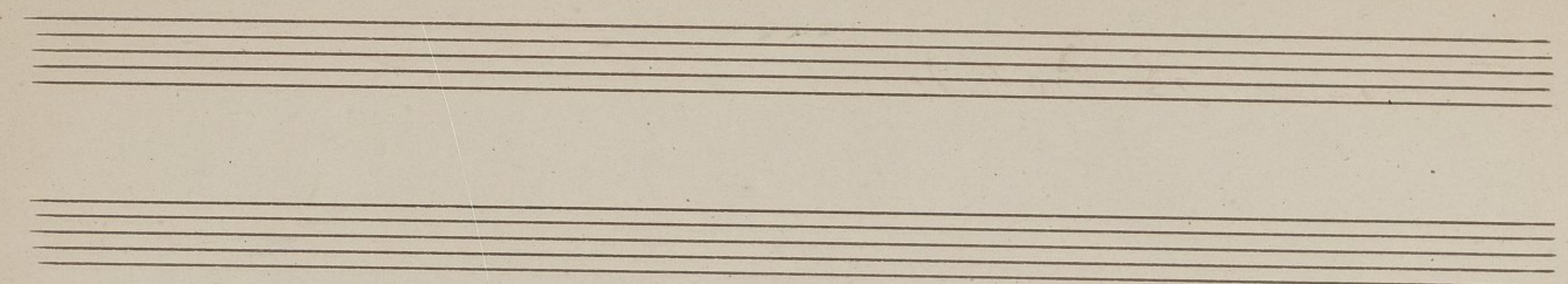
Piano

ppp

mp

cres

The image shows a handwritten musical score for a cello and piano. The title at the top is "F. Chopin Op. 25 Prélude". The tempo is marked "Lento assai". The cello part is labeled "Violoncelle" and the piano part is labeled "Piano". The score is written on multiple staves. The cello part features long, flowing lines with many slurs and ties, and some notes are marked with a "4" above them. The piano part consists of a steady stream of notes, often in pairs or groups, with some dynamic markings like "ppp" and "mp". There are also some markings like "sotto voce" and "cres" (crescendo). The handwriting is in ink on aged paper.



Handwritten musical score, first system. It consists of three staves. The top staff has a treble clef and a key signature of one sharp (F#). It contains two measures with melodic lines, each marked with a '1' above the staff. The middle staff has a bass clef and contains a series of chords and some melodic fragments. The bottom staff has a bass clef and contains a few notes. The word *poco* is written in the first measure of the top staff. There are some handwritten annotations and a '4' in the second measure of the top staff.

Handwritten musical score, second system. It consists of three staves. The top staff has a treble clef and a key signature of one sharp (F#). It contains two measures with melodic lines, each marked with a '3' above the staff. The middle staff has a bass clef and contains a series of chords and some melodic fragments. The bottom staff has a bass clef and contains a few notes. The word *ottenuito* is written in the first measure of the middle staff. There are some handwritten annotations and a '4' in the second measure of the top staff.

Handwritten musical score, third system. It consists of three staves. The top staff has a treble clef and a key signature of one sharp (F#). It contains two measures with melodic lines, each marked with a '3' above the staff. The middle staff has a bass clef and contains a series of chords and some melodic fragments. The bottom staff has a bass clef and contains a few notes. There are some handwritten annotations and a '4' in the second measure of the top staff.

