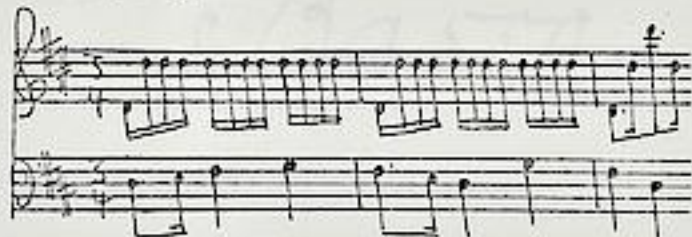


Brioschi, Antonio

BRD DS Mus.ms 121/5

D. #/SINFONJA./à/2. Violini, /Viola/è/Basso./di/Brioschi./  
[Incipit]/



Allegro 3/4 D-dur - An-  
dante C h-moll - Alle-  
gro 2/4 D-dur.

Ms. ca. 1745 (Endler). 34 x 21 cm.

7 St.: vl 1(2x), 2, vla, b(3x). Eine b-St. bez.  
je 1 Bl.

Themat. Kat. Breitkopf I 1762.

5 Mus 121/5  
ms

D. #

MB.

# SINFONIA.

à

2. Violini,

Viola

è

Basso.

di

Brioschi.



Sinfonia.

Violino I.

Brioschi.

Handwritten musical score for Violino I, Sinfonia by Brioschi. The score is written on 14 staves. The tempo is marked *allegro*. The key signature is one sharp (F#) and the time signature is 3/4. The score includes various musical notations such as notes, rests, and dynamic markings. The dynamic markings are: *pian:*, *fort:*, *pian:*, *fort:*, *pian:*, *fort:*, *pian:*, *fort:*, *pian:*, *fort:*, *pian:*, *fort:*, *pian:*, *fort:*. There are also some markings like *tr* (trill) and *tr* (trill) above notes. The score ends with a double bar line and a repeat sign.

Andante.



*Andante e Sempre piano.*

Handwritten musical score for the first section, marked "Andante e Sempre piano". The score consists of ten staves of music. The first staff begins with a treble clef, a key signature of one sharp (F#), and a common time signature (C). The music is written in a flowing, melodic style with various note values and rests. The second staff starts with a bass clef. The third staff returns to a treble clef. The fourth staff has a treble clef and includes a wavy line below the staff. The fifth staff has a treble clef and includes a wavy line below the staff. The sixth staff has a treble clef and includes a wavy line below the staff. The seventh staff has a treble clef and includes a wavy line below the staff. The eighth staff has a treble clef and includes a wavy line below the staff. The ninth staff has a treble clef and includes a wavy line below the staff. The tenth staff has a treble clef and includes a wavy line below the staff.

Handwritten musical score for the second section, marked "Allegro". The score consists of ten staves of music. The first staff begins with a treble clef, a key signature of one sharp (F#), and a 2/2 time signature. The music is written in a more rhythmic and energetic style. The second staff has a treble clef. The third staff has a treble clef. The fourth staff has a treble clef and includes the dynamic marking "pian:". The fifth staff has a treble clef and includes the dynamic markings "fort: pian:" and "fort: pian:". The sixth staff has a treble clef and includes the dynamic marking "fort:". The seventh staff has a treble clef and includes the dynamic marking "piano". The eighth staff has a treble clef and includes the dynamic marking "fort:". The ninth staff has a treble clef and includes the dynamic marking "piano". The tenth staff has a treble clef and includes the dynamic marking "fort:".

Sinfonia.

Violino 2.

allegro

piano forte.

piano forte.

piano forte.

piano forte.

piano forte.

piano forte.

piano forte.

piano forte.

piano forte.

piano forte.

piano forte.

piano forte.

piano forte.

piano forte.

piano forte.

Fine.

*Andante e sempre piano.*

Handwritten musical score for the first section, 'Andante e sempre piano'. The score consists of ten staves of music. The first staff begins with a treble clef, a key signature of one sharp (F#), and a common time signature (C). The music is written in a cursive hand and features a variety of note values, including eighth and sixteenth notes, as well as rests. The tempo and dynamics are indicated by the text 'Andante e sempre piano' at the top left.

A few staves of handwritten musical notation, including a double bar line, indicating a section break or the end of a phrase.

Handwritten musical score for the second section, 'Allegro'. The score consists of seven staves of music. The first staff begins with a treble clef, a key signature of one sharp (F#), and a 2/4 time signature. The tempo is indicated by the text 'Allegro' at the top left. The music is written in a cursive hand and features a variety of note values, including eighth and sixteenth notes, as well as rests. The tempo and dynamics are indicated by the text 'Allegro' at the top left.

*Allegro.*

# Viola.

Handwritten musical score for Viola, first section (Allegro). The score consists of ten staves of music. The first staff begins with a treble clef, a key signature of one sharp (F#), and a 3/4 time signature. The tempo is marked *Allegro.* The music features various dynamics including *pian*, *f*, and *fort.* There are first and second endings indicated by '1.' and '2.' throughout the section. The notation includes eighth and sixteenth notes, rests, and accidentals.

## *Andant*

*Sempre piano.*

Handwritten musical score for Viola, second section (*Andant*). The section begins with a new staff and a key signature change to two sharps (F# and C#). The tempo is marked *Andant* and the dynamic is *Sempre piano.* The music is primarily composed of half and quarter notes. The section concludes with a double bar line on the final staff.

*Allegro.*

*Allegro.*

A handwritten musical score on six staves. The first staff begins with a treble clef, a key signature of one sharp (F#), and a 2/4 time signature. The tempo is marked 'Allegro.' The notation includes various note values (quarter, eighth, and sixteenth notes), rests, and dynamic markings such as 'p' (piano) and 'f' (forte). There are also first and second endings indicated by '1.' and '2.'. The score concludes with a double bar line and a final cadence symbol.



Sinfonia.

Basso.

Andante

Tempo piano

Allegro.



Allegro.

Handwritten musical score for a piece titled "Allegro." The score consists of ten staves of music. The first staff begins with a treble clef, a key signature of one sharp (F#), and a 2/4 time signature. The music is written in a cursive, handwritten style. Above the notes, there are numerous numbers (e.g., 4, 5, 6, 7) and some symbols (e.g., #) indicating fingerings and accidentals. The second staff has a similar key signature and time signature. The third staff has a treble clef and a 2/4 time signature. The fourth staff has a treble clef and a 2/4 time signature. The fifth staff has a treble clef and a 2/4 time signature. The sixth staff has a treble clef and a 2/4 time signature. The seventh staff has a treble clef and a 2/4 time signature. The eighth staff has a treble clef and a 2/4 time signature. The ninth staff has a treble clef and a 2/4 time signature. The tenth staff has a treble clef and a 2/4 time signature. The music ends with a double bar line and a fermata. Below the tenth staff, there is a large, stylized signature or scribble.



*Allegro.*

# Violino I.

This page contains a handwritten musical score for Violino I, consisting of 15 staves. The music is written in treble clef with a key signature of one sharp (F#) and a 3/4 time signature. The tempo is marked 'Allegro.' The score includes various musical notations such as eighth and sixteenth notes, rests, and dynamic markings including 'pian.', 'fort.', and 'pianissimo'. The notation is dense, particularly in the lower staves, with many beamed notes and slurs. The paper shows signs of age, including some staining and discoloration.



*Andante*

*Sempre piano*

Handwritten musical score for the first section, marked "Andante" and "Sempre piano". It consists of seven staves of music in a single system. The notation includes various note values, rests, and dynamic markings. The piece concludes with a double bar line and a repeat sign.

*Allegro*

Handwritten musical score for the second section, marked "Allegro". It consists of seven staves of music in a single system. The notation is more rhythmic and includes dynamic markings such as "pian.", "fort.", and "pian.".

Sinfonia

Mus. ms. 121/5

Basso.

Handwritten musical score for Bassoon, measures 1-12. The score is written on ten staves. It begins with a treble clef and a key signature of one sharp (F#). The notation includes various note values, rests, and dynamic markings such as *pp*, *f*, and *ff*. There are also some performance instructions like *rit.* and *Al.* (Allegro). The music features complex rhythmic patterns and some triplet markings.

Handwritten musical score for Bassoon, measures 13-24. The score continues on ten staves. At measure 13, there is a tempo change to *Andante* and a dynamic marking of *sempre piano*. The notation becomes more spacious, with longer note values and rests. There are also some markings like *rit.* and *Al.* (Allegro) interspersed. The music features a mix of quarter and eighth notes.

Handwritten musical score for Bassoon, measures 25-26. The score concludes on two staves. At measure 25, there is a tempo change to *Allegro*. The notation includes a final cadence with a double bar line and a repeat sign. The music ends with a few final notes and rests.

*Allegro*

Handwritten musical score on aged paper, featuring 12 staves of music. The notation includes treble clefs, a key signature of one sharp (F#), and a 2/4 time signature. The music is marked *Allegro*. The score includes various rhythmic patterns, including eighth and sixteenth notes, and rests. There are some handwritten annotations, such as "1." above the first staff, "3." above the sixth staff, and "bis" written above the eighth staff. The score concludes with a double bar line and a decorative flourish.

Sinfonia.

Mus. Ms. 121/5

Basso.

Handwritten musical score for the Bassoon part of a symphony. The score consists of ten staves of music. The notation includes various rhythmic values, accidentals, and dynamic markings such as *piano* and *fort.*. There are also numerical markings (1., 2., 3., 4., 7.) above the notes, possibly indicating fingerings or measure numbers. The music is written in a single system across the ten staves.

Adant  
Sempre piano

Handwritten musical score for the Adant section, marked *Sempre piano*. It consists of seven staves of music. The notation is characterized by a slower tempo and a consistent use of piano dynamics. The music features a variety of note values and rests, typical of a lyrical passage.

Allegro.

*Allegro.*