

G. CASSA - PIATTI

TRIANGOLO

G. VERDI

Nabucodonosor

EDWIN F. KALMUS & Co., INC.

Music Publishers

SINFONIA

Andante

G. Cassa

f

Allegro

11

f

1

f

3

3

Andante

Andantino

3

15

A

19

B

18

3

Allegro

C

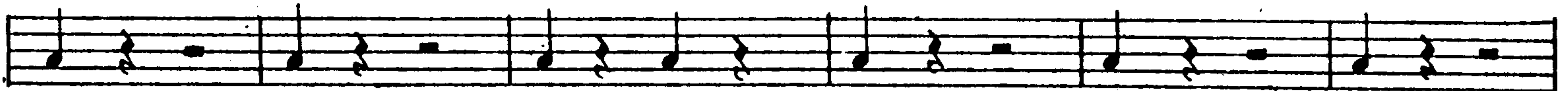
27

(Tamb.)

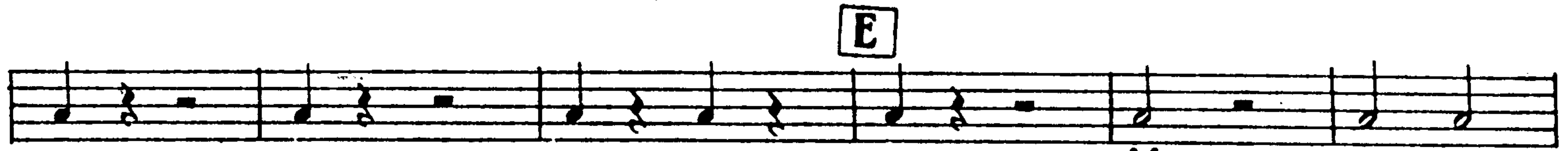
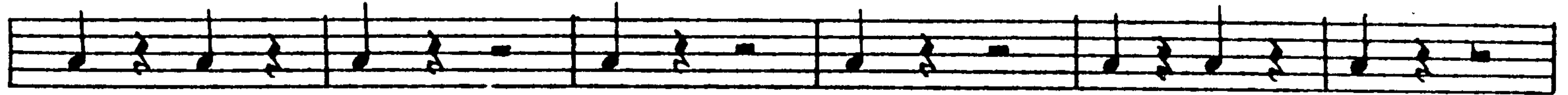
f

D

8



pp



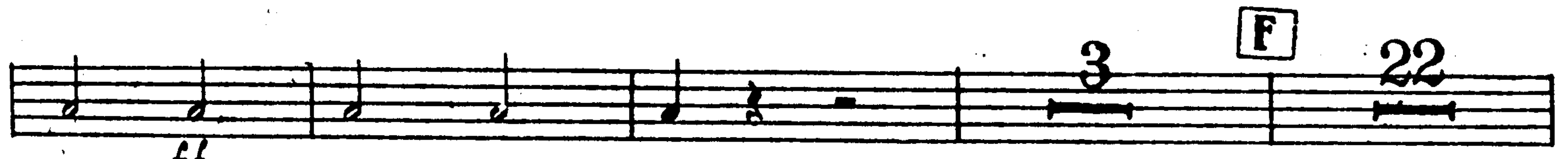
ff



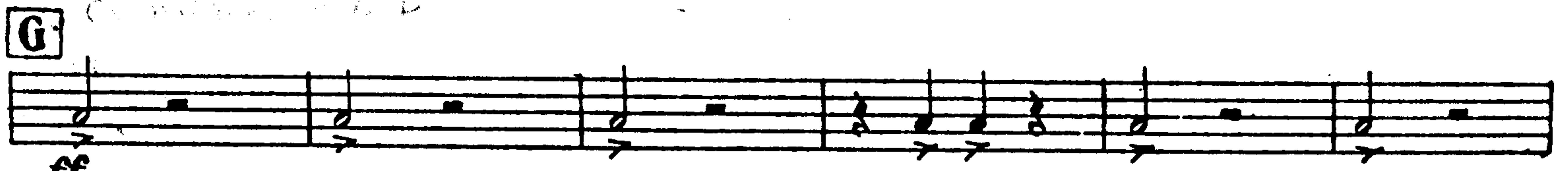
ff



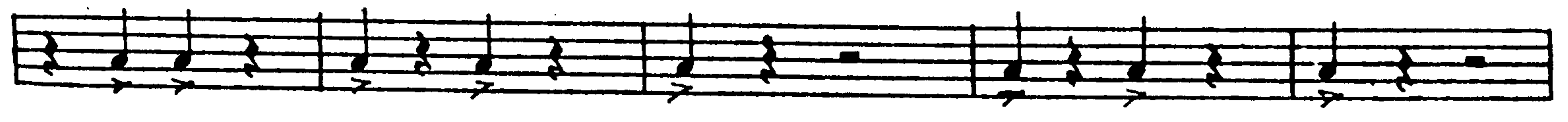
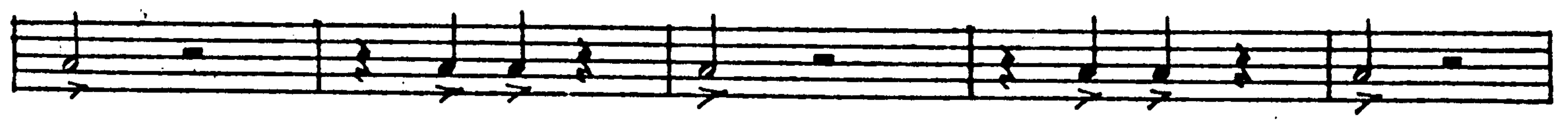
f



ff

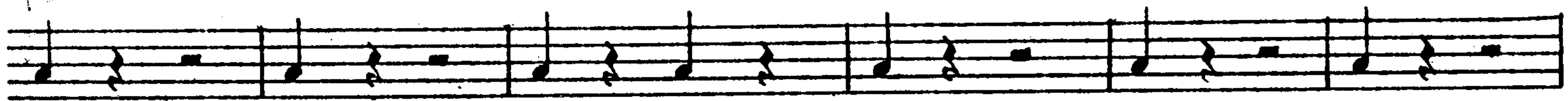


ff



ff

p



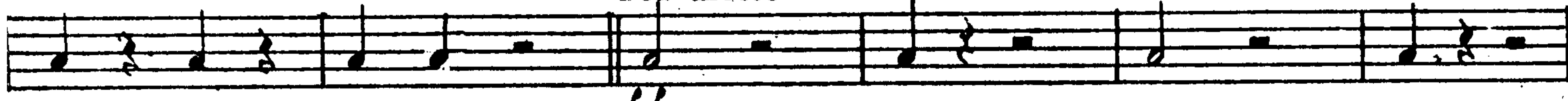
p

cresc.

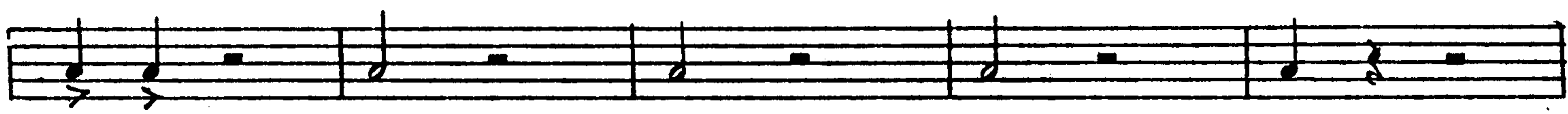


cresc.

Più mosso



ff



p



ff



p

ATTO I.

CORO D'INTRODUZIONE

Allegro mosso

G. Cassa

Handwritten annotations: *12/6* above staff 7, *6 D* above staff 5.

Boxed numbers: 1, 2, 3, 4, 5, 6, 7.

Dynamics: *f*, *ff*, *p*.

Tempo: *Allegro mosso*, *Un poco meno mosso*.

Performance instruction: *(Arpa)*.

Articulation: *Spe -* at the end of the final staff.

6
CAVATINA - Zaccaria


- rate, o figli! Id-dio del suo poter diè segno **Largo** **9** **Andante maestoso** 20 20



10 *a tempo*

Triangolo

3 1 2 3 4 5 6 7 9



p

11 **Allegro** **12** *freno, freno al ti-mor!* 2 2 16 2 *di Si-on sulle ro-vine lo stra-*



- nier non pose-ra. 5 **G. Cassa**



13 **Allegro** **14** 12 1 9 2 **15** *f* *f*



16 **17** **Allegro** 12 1 9 2 **18** *Più mosso* *f* *f*



1



19



5



RECITATIVO e TERZETTINO *Tace*

10
33
Coro

Allegro agitato

14 29 13 30 G. Cassa
(Timp.) *f*

31 15 32 2 *f*

5 *f*

Viva Na - bucco ! Viva !

33 Allegro marziale 18 34 *f*

Finale 1.

1 35 6 1 *f*

Musical staff with notes and rests.

36 *f*

37

38 Allegro col canto 39 a tempo 40 Meno mosso 7 12 7

Andante

Si - onne scorrer do - vrà!

42

43

Musical staff with notes, rests, and a fermata. Measure numbers 14 and 8 are indicated above the staff.

f

Musical staff with notes, rests, and a fermata. Measure number 44 is indicated above the staff.

f

ff

Musical staff with notes, rests, and a fermata. Measure number 3 is indicated above the staff. The word *triummi* is written above the staff.

ff

f

45 Allegro

Mise - ra, l'amor ti salve - rà!

Presto

46

47

48

Musical staff with notes, rests, and a fermata. Measure numbers 23, 3, 16, 26, and 1 are indicated above the staff.

p

Musical staff with notes, rests, and a fermata.

cresc.

Musical staff with notes, rests, and a fermata. Measure number 49 is indicated above the staff.

f

Musical staff with notes, rests, and a fermata. Measure number 50 is indicated above the staff.

f

Musical staff with notes, rests, and a fermata. Measure numbers 3, 4, 5, 6, 1, and 2 are indicated above the staff.

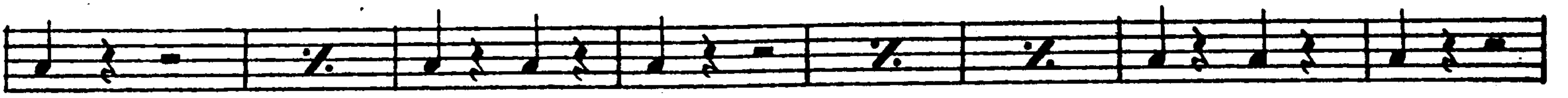
Musical staff with notes, rests, and a fermata. Measure numbers 3, 4, 5, 6, 1, 2, and 3 are indicated above the staff.

Musical staff with notes, rests, and a fermata. Measure number 51 is indicated above the staff. The text *oh fug - gite il male -* is written below the staff.

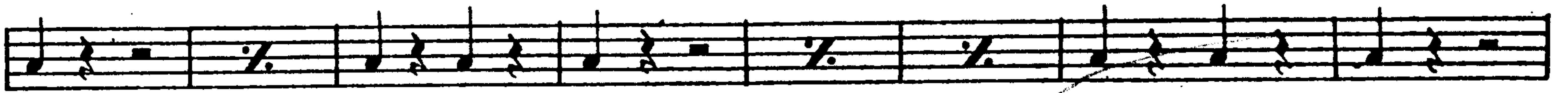
Musical staff with notes, rests, and a fermata. Measure numbers 52, 53, and 54 are indicated above the staff. The text *- det - - - - - to terra e cielo gride - rà* is written below the staff.

p

f



pp



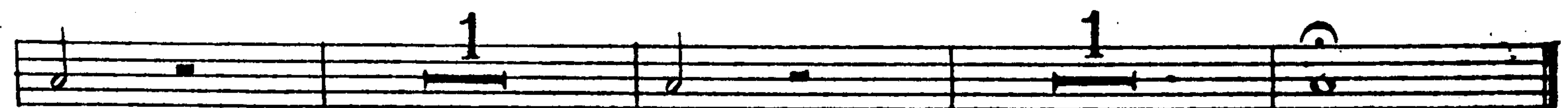
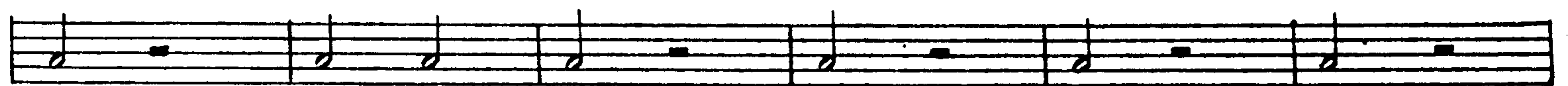
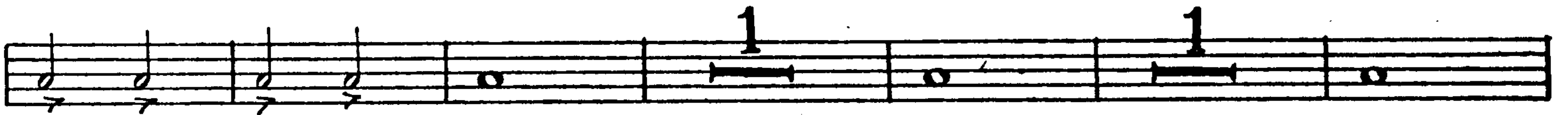
f

55
56

Più presto



ff



ant

Fine dell' Atto I.

ATTO II.

SCENA ED ARIA

Allegro mosso

2 Recit.

Ben io l'invenni, o fatal scritto!..

3 Allegro 4 Recit. 15 7 5 10 6 4 Adagio 3 7 Andante 3

14 8 4 2 9 3 2

0 Allegro mosso 22 Il tutto è pronto già. 11 Più mosso 19 Son teco Va! 12 oh fe-del, di te men

f

forte questa donna non sa-rà!

13 Meno mosso 13 Salgo già 12 14 1

f *f*

Salgo

5 Meno mosso 13 già 12 16

f *ff*

1 2 3 4 5 6 7 17

RECITATIVO e PREGHIERA (Tace)

CORO DI LEVITI

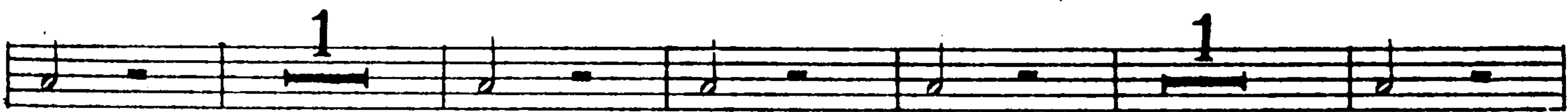
G. Cassa

Grave

14 ²² Presto 12

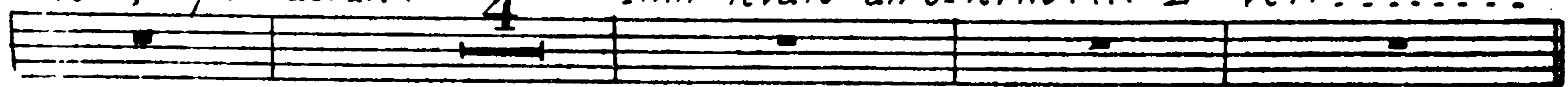


25 Cym + B.D.
Più presto



26 *cut*
Deh fra - #

Meno mosso
-telli, per-donate! 4 Inni levate all'è-terno!... E' veri.....



FINALE SECONDO

Allegro agitato

27 *la!*
sola *tr*

23 29 *Dal capo*

p

ff

mio la pren - - - - - di!

VUOTA

30

ff

2

VUOTA

2

VUOTA

2

Vuota

ff

ff

31 *B.D*

Andante

32 33 34

f

35

2

4

ff

p

f

cut to 42

Allegro

36 *S'odaur come!*

37 38 39 *Giù! pròstrati!.. non son più Re, son Dio!*

40 41

ff

42 *m 8*

Allegro

12

chi? Oh!.. mia figlia!

4

43 *m 4*

Adagio

Allegro come prima

1

44

7

4

3

45 *m 4*

Andante

4

3

46 *m 8*

Adagio

5

una lagrima spun- to?

3

2

Cym

Allegro

1 2 3 4 5 6

ff

Fine dell' Atto II.

ATTO III.

CORO D'INTRODUZIONE

Tempo di Marcia

16 1 G. Cassa *f*

2 TRIANG *p*

5 *nella gioia* G. CASSA *f*

5

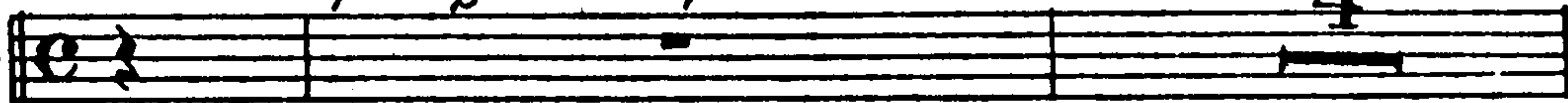
RECITATIVO e DUETTO Tace

Coro di schiavi Ebrei Tace

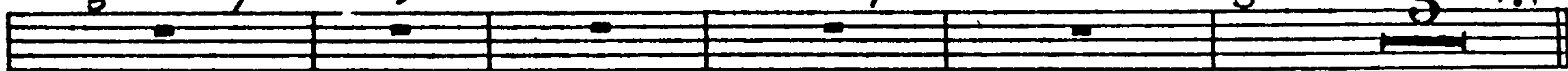
PROFEZIA e FINALE TERZO

Recit.

Oh chi piange? di femmine im-belli



angosciati fra-telli, sul mio labbro fa-vella-il Si-gnor!



30

Andante mosso

G. Cassa 1



pp

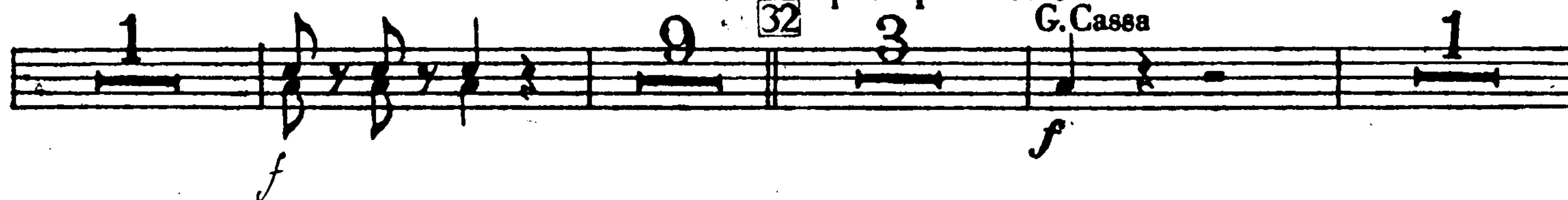
31



Un poco più mosso

32

G. Cassa

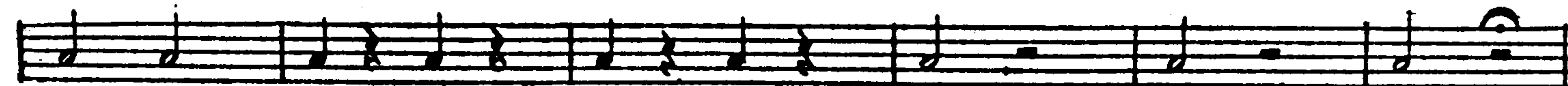
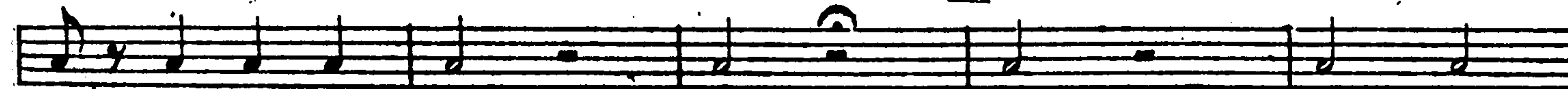


33

Poco più mosso



34



Fine dell' Atto III.

ATTO IV.

PRELUDIO, SCENA ED ARIA 1 Andante 2 Marziale

Allegro 11 7 10

3 Allegro 4 Rec. 5 Allegro mod.^{to} assai 6 *Marcia funebre* 7 Allegro 8 Andante 9 Largo

11 8 15 18 14 6 14

10 2 *e i miei riti e i miei riti strugge-ro'* 5 11 *col canto* 6 *adorarti ognor sa-pro'* 2

12 Allegro 16 *Abdallo, il brando, il brando mio* 6 13 Allegro 9 *G. CASSA* 2 3 4 5

(Tr.ⁿⁱ) *mf*

15 6 7 15 16

8 17

ff *f*

18

MARCIA FUNEBRE, PREGHIERA e FINALE QUARTO

Allegro assai mod.^{to}

31

19 Rec. 11

20 Andante 9

21 4 8 8 11

(Tr.ⁿⁱ) (Timp.)

22 Allegro 8 11

23 13 *è forte, è forte Ei sol!* 8 24 Allegro 25 *Ei solo è grande, è forte Ei*

26 Allegro G. Cassa 4 *sol!* *f*

27 Adagio 24 28 *f*

29 Andante moderato 5 18 30 6 2

31 Allegro 1 *non male dire, non maledire a me.* 1 2 3

4 5 6

p

Fine

TAMBURO MILITARE

G. VERDI

Nabucodonosor

EDWIN F. KALMUS & Co., INC.
Music Publishers

SINFONIA

Andante

Musical staff for the Andante section, measures 8 to 11. The staff is in common time (C) and contains two measures of music with a forte (*ff*) dynamic marking. The first measure is marked with a large '8' above it, and the second measure is marked with a large '11' above it.

Allegro

Musical staff for the Allegro section, measures 12 to 15. The staff contains four measures of music with a piano (*pp*) dynamic marking and staccato (*stacc.*) articulation.

Musical staff for the Allegro section, measures 16 to 19. The staff contains four measures of music with a forte (*ff*) dynamic marking. Measures 17, 18, and 19 are marked with first, second, and third endings (1., 2., 3.) above them.

Musical staff for the Allegro section, measures 20 to 23. The staff contains four measures of music with a piano (*pp*) dynamic marking in the first two measures and a forte (*ff*) dynamic marking in the last two measures.

Musical staff for the Allegro section, measures 24 to 27. The staff contains four measures of music with a forte (*ff*) dynamic marking. Measures 26 and 27 feature trills (*tr*) and a second ending (2.) above the final measure.

Andante come prima Andantino

Musical staff for the Andante section, measures 28 to 31. The staff contains four measures of music with a piano (*p*) dynamic marking. Measures 28, 29, and 31 are marked with first, second, and third endings (3., 15., 19., B, 19.) above them. A boxed 'A' is placed above measure 30.

Allegro

Musical staff for the Allegro section, measures 32 to 35. The staff contains four measures of music with a piano (*pp*) dynamic marking.

Musical staff for the Allegro section, measures 36 to 39. The staff contains four measures of music with a piano (*p*) dynamic marking.

Musical staff for the Allegro section, measures 40 to 47. The staff contains eight measures of music with a piano (*p*) dynamic marking. Measures 41, 42, 43, 44, 45, 46, and 47 are marked with first through seventh endings (1., 2., 3., 4., 5., 6., 7.) above them. Crescendo (*cresc.*) markings are present below measures 43 and 47.

// cut to G.
C VE.

C

rinforz. *ff*

D

pp

p cresc.

f

E

tr tr tr *ff* *ff*

f

ff

F

G

H

Più mosso

I

Play

ATTO I.
 CORO D'INTRODUZIONE
 CAVATINA - Zaccaria
 RECITATIVO e TERZETTINO
 TACE

FINALE PRIMO

Viva Na - bucco! Viva! 33 18 34

Allegro marziale

// CUT TO 45

40 **Meno mosso** 6 41 **Andante** 8 42 10 43 33

45 **Allegro** 23 *Mi-se-ra Pa-mor ti salve-ra!* 2

46 **Presto** 47 48 *pp*

cresc.

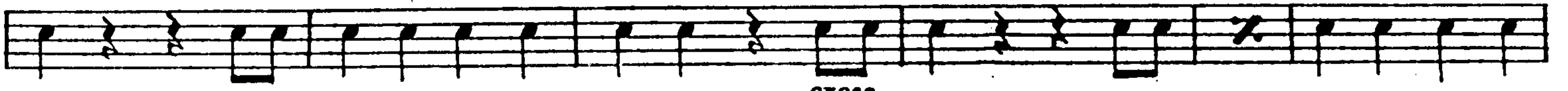
49 *f*

50 *ff*

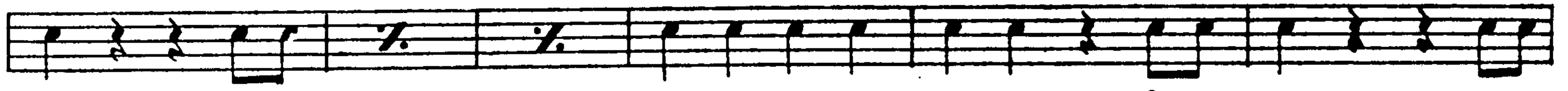
51 *oh fug-*

-gite il male del *to terra e cielo gride-ra* *ff*

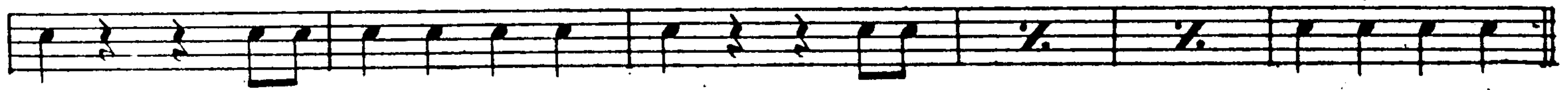
54 *pp*



cresc.

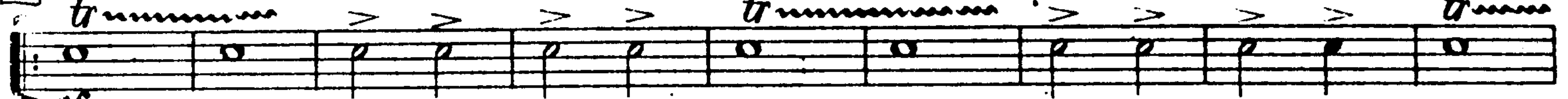


f



55

56 Più presto



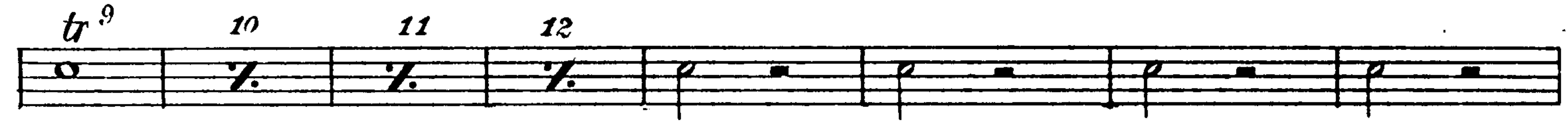
ff



57



58



VUOTA

VUOTA

Fine dell' Atto I.

ATTO II.

SCENA ED ARIA

Tace

RECITATIVO e PREGHIERA (Tace)

CORO DI LEVITI

IN 3
 Grave *Il Pontefice vi brama... Maledetto dal Si-^{gnor!}gnor!*
 8 3 1
 f

2 *IN 2*
 Presto
p sottovoce

cresc. f

f p f f p

23 f 13

truu truu truuuu **24** f p

cresc.

f

p f f

^op f

FASTER

25 Più presto

Il resto dell'Atto II. Tace

ATTO III.

CORO D'INTRODUZIONE

(In mancanza della Banda)

Allegro marziale

2 1 2 3 4 5 6 7 8 9 10

pp 11 12 13 14 15 16 17 18 19 20

21 22 23 24 25 26 27 28 29 30

31 32 **3**

4

5

3 4 *tim* *tim*

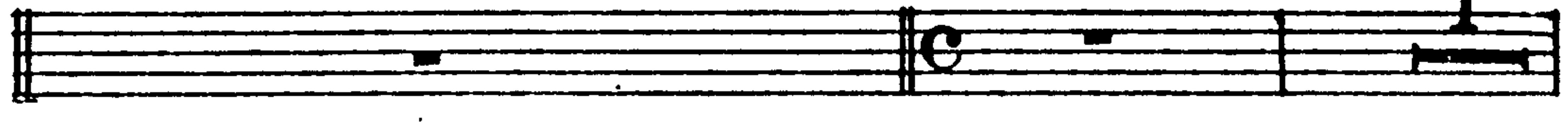
TIMPAN

Il resto dell' Atto III. Tace

ATTO IV.

PRELUDIO, SCENA ED ARIA *Marcia funebre* *Sia nostra cada in cenere Fe- ne - - - - - na* 6 Allegro mod.^{to} assai

Tace sino alla chiamata:



(In mancanza della Banda)



8 Andante

9 Largo

10 Allegro

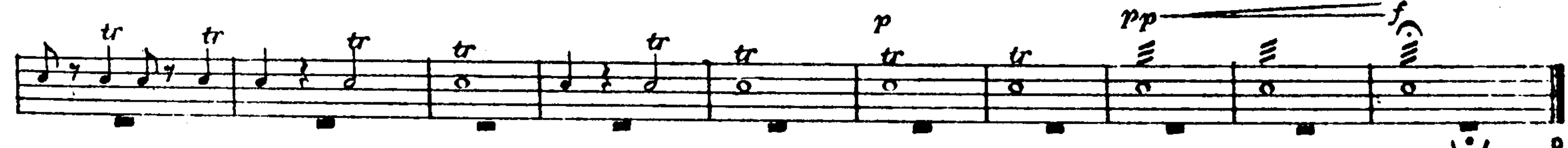
11 Allegro



MARCIA FUNEBRE, PREGHIERA e FINALE QUARTO

(In mancanza della Banda)

Allegro assai mod.^{to}



Il resto dell' Opera Tace