

Sonata in a (Opus No.6.6)

Score

for Trumpet & Organ

Tomaso Albinoni (1671-1750)

Arr. Michel Rondeau

1 - Larghetto ♩ = 110

Trumpet in C

Organ

This system contains the first three measures of the piece. The Trumpet in C part is written in a single staff with a treble clef and a common time signature. The Organ part is written in two staves (treble and bass clefs) with a common time signature. The organ accompaniment features a steady eighth-note bass line and chords in the treble.

C Tpt.

Org.

This system contains measures 4 through 6. The C Trumpet part begins with a four-measure rest, then enters with a melodic line that includes a trill (tr) in measure 5. The Organ part continues with its accompaniment, featuring a more active treble line with eighth-note patterns.

C Tpt.

Org.

This system contains measures 7 through 9. The C Trumpet part has another four-measure rest, then enters with a melodic line that includes a trill (tr) in measure 8. The Organ part continues with its accompaniment, featuring a more active treble line with eighth-note patterns.

Albinoni Sonata in a (Opus No.6.6)

C Tpt. 
Org. 

C Tpt. 
Org. 

C Tpt. 
Org. 

C Tpt. 
Org. 

Albinoni Sonata in a (Opus No.6.6)
2 - Allegro

22

C Tpt.

Org.

22

tr

Detailed description: This system covers measures 22 to 24. The C Tpt. part begins with a whole rest in measure 22, followed by a quarter rest and a quarter note G4 in measure 23, and then a series of eighth notes in measure 24. The Organ part features a treble clef with a key signature of one sharp (F#) and a bass clef. In measure 22, the treble has a quarter note G4 with a trill (tr) and a quarter note F#4, while the bass has a half note G3. In measure 23, the treble has a quarter rest and a quarter note G4, and the bass has a quarter note G3. In measure 24, the treble has a quarter note G4 and a quarter note F#4, and the bass has a series of eighth notes.

25

C Tpt.

Org.

25

Detailed description: This system covers measures 25 to 26. The C Tpt. part has a continuous eighth-note melody in measure 25 and a quarter rest followed by a quarter note G4 in measure 26. The Organ part has a treble clef with a key signature of one sharp (F#) and a bass clef. In measure 25, the treble has a quarter note G4 and a quarter note F#4, and the bass has a quarter note G3. In measure 26, the treble has a quarter note G4 and a quarter note F#4, and the bass has a quarter note G3.

27

C Tpt.

Org.

27

Detailed description: This system covers measures 27 to 29. The C Tpt. part has a continuous eighth-note melody in measure 27 and a quarter rest followed by a quarter note G4 in measure 28, and then a series of eighth notes in measure 29. The Organ part has a treble clef with a key signature of one sharp (F#) and a bass clef. In measure 27, the treble has a quarter note G4 and a quarter note F#4, and the bass has a quarter note G3. In measure 28, the treble has a quarter note G4 and a quarter note F#4, and the bass has a quarter note G3. In measure 29, the treble has a quarter note G4 and a quarter note F#4, and the bass has a quarter note G3.

30

C Tpt.

Org.

30

tr

Detailed description: This system covers measures 30 to 32. The C Tpt. part has a continuous eighth-note melody in measure 30, a quarter rest followed by a quarter note G4 in measure 31, and then a series of eighth notes in measure 32. The Organ part has a treble clef with a key signature of one sharp (F#) and a bass clef. In measure 30, the treble has a quarter note G4 and a quarter note F#4, and the bass has a quarter note G3. In measure 31, the treble has a quarter note G4 and a quarter note F#4, and the bass has a quarter note G3. In measure 32, the treble has a quarter note G4 and a quarter note F#4, and the bass has a quarter note G3.

Albinoni Sonata in a (Opus No.6.6)

C Tpt. 33

Org.

This system covers measures 33 to 35. The C Tpt. part begins with a whole rest in measure 33, followed by a quarter note G4 in measure 34 and a quarter note A4 in measure 35. The Organ part features a complex texture: the right hand has a steady eighth-note accompaniment starting on G4, while the left hand plays a rhythmic pattern of eighth notes on G3, A3, and B3.

C Tpt. 36

Org.

This system covers measures 36 to 38. The C Tpt. part has a whole rest in measure 36, then enters in measure 37 with a quarter note G4, followed by a quarter note A4 in measure 38. The Organ part continues with the eighth-note accompaniment in the right hand and the rhythmic pattern in the left hand, with some chordal changes in the right hand.

C Tpt. 39

Org.

This system covers measures 39 to 41. The C Tpt. part starts with a quarter note G4 in measure 39, followed by a quarter note A4 in measure 40, and a quarter note B4 in measure 41. A trill (tr) is indicated above the B4 in measure 41. The Organ part continues with the eighth-note accompaniment and rhythmic pattern.

C Tpt. 42

Org.

This system covers measures 42 to 44. The C Tpt. part has a whole rest in measure 42, then enters in measure 43 with a quarter note G4, followed by a quarter note A4 in measure 44. The Organ part continues with the eighth-note accompaniment and rhythmic pattern, with some chordal changes in the right hand.

44

C Tpt.

Org.

46

C Tpt.

Org.

49

C Tpt.

1.

2.

Org.

52

C Tpt.

Org.

C Tpt. 54

Org. 54

This system contains measures 54 to 56. The C Trumpet part (top staff) features a continuous eighth-note melodic line with a key signature of one sharp (F#). The Organ part (bottom two staves) provides harmonic support with chords in the right hand and a bass line in the left hand.

C Tpt. 57

Org. 57

This system contains measures 57 to 59. The C Trumpet part continues its melodic line, ending with a quarter rest in measure 59. The Organ part continues with its accompaniment.

C Tpt. 60

Org. 60

This system contains measures 60 to 62. The C Trumpet part includes a trill (tr) in measure 61. The Organ part continues with its accompaniment.

C Tpt. 63

Org. 63

This system contains measures 63 to 65. The C Trumpet part has a quarter rest in measure 64. The Organ part continues with its accompaniment.

Albinoni Sonata in a (Opus No.6.6)

C Tpt. 66

Org. 66

Detailed description: This system covers measures 66 to 68. The C Tpt. part features a continuous eighth-note pattern with a melodic line. The Organ part consists of a bass line with eighth notes and a treble line with chords and occasional eighth notes.

C Tpt. 69

Org. 69

Detailed description: This system covers measures 69 to 71. The C Tpt. part has a melodic line with a trill (tr) in measure 71. The Organ part continues with a bass line and treble chords.

C Tpt. 72

Org. 72

Detailed description: This system covers measures 72 to 74. The C Tpt. part is mostly silent, with a first ending bracket (1.) over the final measure. The Organ part has a complex texture with eighth-note patterns in both hands and a trill (tr) in the treble in measure 74.

C Tpt. 75

Org. 75

3 - Adagio

Detailed description: This system covers measures 75 to 80. It begins with a second ending bracket (2.) for the C Tpt. part. The tempo and meter change to 3/4, indicated by the text "3 - Adagio". The C Tpt. part has a melodic line with a trill (tr) in measure 75. The Organ part features a bass line and treble chords.

C Tpt. 81 *tr*

Org. 81

C Tpt. 87

Org. 87

C Tpt. 93

Org. 93

C Tpt. 98 *tr*

Org. 98 *tr*

Albinoni Sonata in a (Opus No.6.6)

105 **4 - Allegro**

C Tpt.

Org.

112

C Tpt.

Org.

119

C Tpt.

Org.

126

C Tpt.

Org.

Albinoni Sonata in a (Opus No.6.6)

C Tpt.

Org.

133

3 3 3 3 3 3 3 3 3 3

3 3

Detailed description: This system covers measures 133 to 138. The C Tpt. part (top staff) features a melodic line with eighth-note triplets and a long slur over measures 133-134. The Organ part (bottom two staves) provides harmonic support with chords and eighth-note triplets in the bass line.

C Tpt.

Org.

139

3 3 3 3 3 3 3 3 3 3

3 3

Detailed description: This system covers measures 139 to 145. The C Tpt. part (top staff) has a melodic line with eighth-note triplets and rests. The Organ part (bottom two staves) features a complex texture with eighth-note triplets in both hands and a repeat sign in measure 144.

C Tpt.

Org.

146

3 3 3 3 3 3 3 3 3 3

3 3

Detailed description: This system covers measures 146 to 151. The C Tpt. part (top staff) has a melodic line with eighth-note triplets. The Organ part (bottom two staves) features chords and eighth-note triplets in the bass line.

C Tpt.

Org.

152

3 3 3 3 3 3 3 3 3 3 3 3 3 3

Detailed description: This system covers measures 152 to 157. The C Tpt. part (top staff) has a melodic line with eighth-note triplets. The Organ part (bottom two staves) features chords and eighth-note triplets in the bass line.

Albinoni Sonata in a (Opus No.6.6)

C Tpt. 
Org. 

C Tpt. 
Org. 

C Tpt. 
Org. 

C Tpt. 
Org. 

Sonata in a (Opus No.6.6)

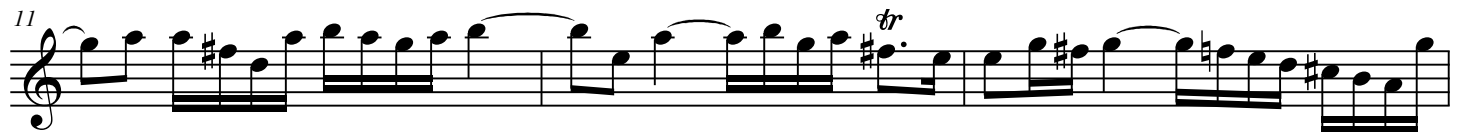
for Trumpet & Organ

Trumpet in C

Tomaso Albinoni (1671-1750)

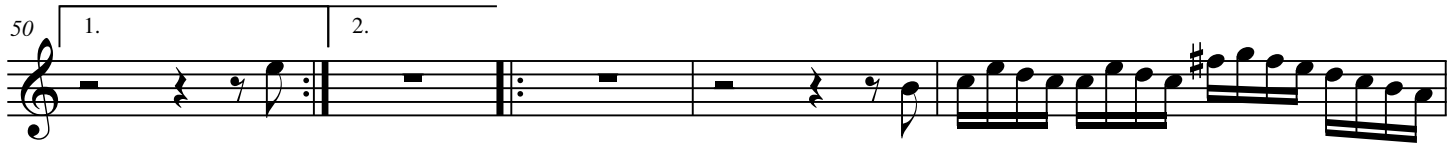
Arr. Michel Rondeau

1 - Larghetto $\text{♩} = 110$



2 Albinoni Sonata in a (Opus No.6.6) C Trumpet

50 1. 2.



55



58



62



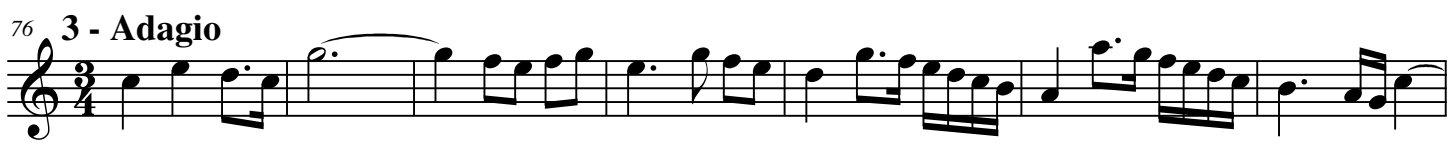
66



69 2 1. 2.



76 3 - Adagio



83 6



95



102 2 4 - Allegro



110



Sonata in a (Opus No.6.6)

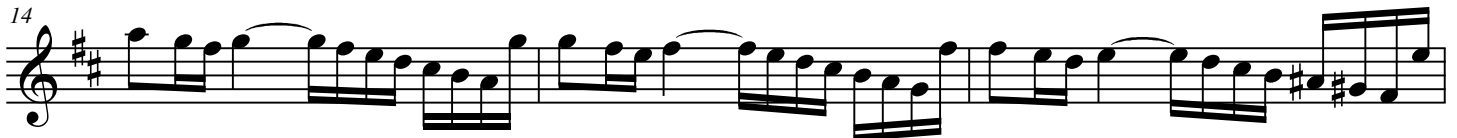
for Trumpet & Organ

Bb Trumpet

Tomaso Albinoni (1671-1750)

Arr. Michel Rondeau

1 - Larghetto ♩ = 110



2 - Allegro



Albinoni Sonata in a (Opus No.6.6) Bb Trumpet

42 6 1. 2.

53

56

59 *tr*

63

66

69 *tr* 2 1. 2.

76 **3 - Adagio**

82 *tr* 6

94

101 *tr* 2 **4 - Allegro**

Albinoni Sonata in a (Opus No.6.6) Bb Trumpet

109

116

123

130

136

141

152

159

171

178

Sonata in a (Opus No.6.6)

Organ

for Trumpet & Organ

Tomaso Albinoni (1671-1750)

Arr. Michel Rondeau

1 - Larghetto ♩ = 110

Trumpet in C

Organ

This system contains the first three measures of the piece. The Trumpet in C part is written on a single staff in treble clef with a common time signature. The Organ part is written on two staves (treble and bass clefs) with a common time signature. The organ accompaniment features a steady eighth-note bass line and chords in the right hand.

C Tpt.

Org.

This system contains measures 4 through 6. The C Trumpet part has a melodic line with a trill (tr) in measure 5. The Organ part continues with its accompaniment, featuring a more active right hand with eighth-note patterns.

C Tpt.

Org.

This system contains measures 7 through 9. The C Trumpet part has a melodic line with a trill (tr) in measure 8. The Organ part continues with its accompaniment, featuring a more active right hand with eighth-note patterns.

Albinoni Sonata in a (Opus No.6.6) Organ

C Tpt.

Org.

Measures 10-12. The C Trumpet part features a melodic line with eighth and sixteenth notes, including a trill in measure 12. The Organ part consists of a right-hand melody with chords and a left-hand accompaniment of eighth notes.

C Tpt.

Org.

Measures 13-15. The C Trumpet part continues with a melodic line. The Organ part features a right-hand melody with chords and a left-hand accompaniment of eighth notes.

C Tpt.

Org.

Measures 16-18. The C Trumpet part includes a melodic line with a flat in measure 17 and a trill in measure 18. The Organ part features a right-hand melody with chords and a left-hand accompaniment of eighth notes.

C Tpt.

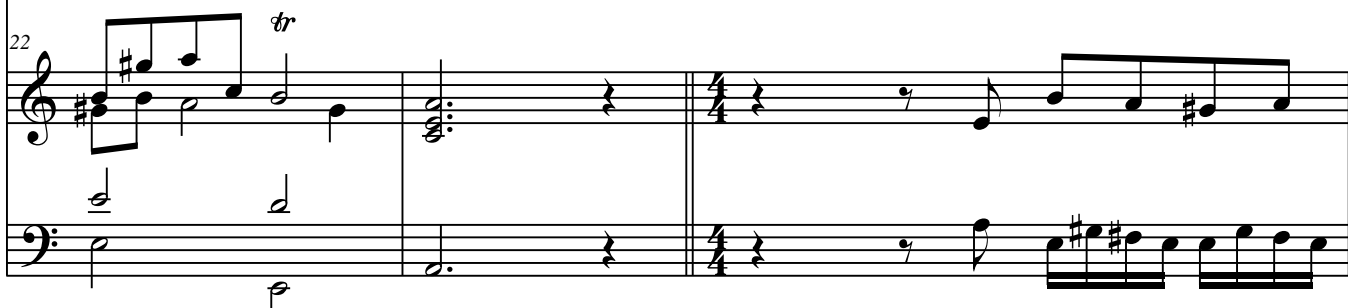
Org.

Measures 19-21. The C Trumpet part has rests in measures 19 and 20, followed by a note in measure 21. The Organ part features a right-hand melody with eighth notes and a left-hand accompaniment of eighth notes.

Albinoni Sonata in a (Opus No.6.6) Organ

2 - Allegro

C Tpt. 

Org. 

C Tpt. 

Org. 

C Tpt. 

Org. 

C Tpt. 

Org. 

Albinoni Sonata in a (Opus No.6.6) Organ

C Tpt.

33

Org.

Detailed description: This system covers measures 33 to 35. The C Tpt. part has a whole rest in measure 33, followed by a quarter rest in measure 34, and then a quarter note G4 in measure 35. The Organ part features a complex texture: the right hand has a series of sixteenth-note runs starting in measure 33, while the left hand plays a steady eighth-note accompaniment.

C Tpt.

36

Org.

Detailed description: This system covers measures 36 to 38. The C Tpt. part has a whole rest in measure 36, followed by a quarter rest in measure 37, and then a quarter note G4 in measure 38. The Organ part continues with the sixteenth-note runs in the right hand and eighth-note accompaniment in the left hand.

C Tpt.

39

Org.

Detailed description: This system covers measures 39 to 41. The C Tpt. part has a quarter note G4 in measure 39, followed by a quarter rest in measure 40, and then a quarter note G4 in measure 41. A trill (tr) is indicated above the G4 in measure 39. The Organ part continues with the sixteenth-note runs in the right hand and eighth-note accompaniment in the left hand.

C Tpt.

42

Org.

Detailed description: This system covers measures 42 to 44. The C Tpt. part has a quarter rest in measure 42, followed by a quarter note G4 in measure 43, and then a quarter rest in measure 44. The Organ part continues with the sixteenth-note runs in the right hand and eighth-note accompaniment in the left hand.

44

C Tpt.

Org.

46

C Tpt.

Org.

49

C Tpt.

Org.

52

C Tpt.

Org.

C Tpt.

Org.

Measures 54-56. The C Trumpet part (top staff) features a continuous eighth-note pattern with a melodic line. The Organ part (bottom two staves) consists of block chords in the right hand and a rhythmic accompaniment in the left hand.

C Tpt.

Org.

Measures 57-59. The C Trumpet part continues with eighth notes, including a trill in measure 59. The Organ part features a change in the right-hand accompaniment pattern.

C Tpt.

Org.

Measures 60-62. The C Trumpet part has a trill in measure 60 and rests in measures 61 and 62. The Organ part continues with its accompaniment.

C Tpt.


Org.

Measures 63-65. The C Trumpet part resumes eighth-note playing in measure 63. The Organ part continues with its accompaniment.

Albinoni Sonata in a (Opus No.6.6) Organ


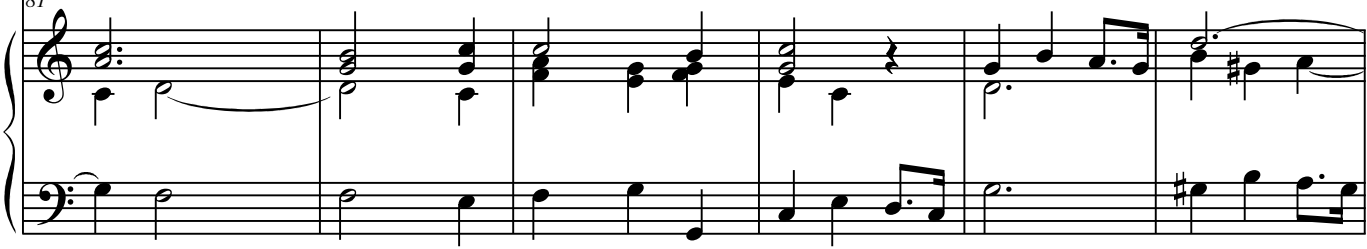
C Tpt. 
Org. 

C Tpt. 
Org. 

C Tpt. 
Org. 

C Tpt. 
Org. 

Albinoni Sonata in a (Opus No.6.6) Organ

C Tpt. 
Org. 

C Tpt. 
Org. 

C Tpt. 
Org. 

C Tpt. 
Org. 

Albinoni Sonata in a (Opus No.6.6) Organ

105 **4 - Allegro**
C Tpt.

Org.

112
C Tpt.

Org.

119
C Tpt.

Org.

126
C Tpt.

Org.

Albinoni Sonata in a (Opus No.6.6) Organ

C Tpt.

133

Org.

133

Detailed description: This system covers measures 133 to 138. The C Tpt. part (top staff) features a melodic line with eighth-note triplets and a long slur over measures 133-134. The Organ part (bottom two staves) provides harmonic support with chords and eighth-note triplets in both hands.

C Tpt.

139

Org.

139

Detailed description: This system covers measures 139 to 145. The C Tpt. part (top staff) has a melodic line with a repeat sign at the end of measure 145. The Organ part (bottom two staves) includes eighth-note triplets and chords, with a repeat sign at the end of measure 145.

C Tpt.

146

Org.

146

Detailed description: This system covers measures 146 to 151. The C Tpt. part (top staff) continues the melodic line with eighth-note triplets. The Organ part (bottom two staves) features chords and eighth-note triplets.

C Tpt.

152

Org.

152

Detailed description: This system covers measures 152 to 157. The C Tpt. part (top staff) continues the melodic line with eighth-note triplets. The Organ part (bottom two staves) features chords and eighth-note triplets.

C Tpt.

159

159

Org.

This system covers measures 159 to 166. The C Tpt. part features a melodic line with eighth-note triplets and a trill in measure 160. The Organ part provides harmonic support with chords and accompaniment, including eighth-note triplets in the right hand and quarter notes in the left hand.

C Tpt.

167

167

Org.

This system covers measures 167 to 173. The C Tpt. part continues with eighth-note triplets. The Organ part features a more active right hand with eighth-note triplets and chords, while the left hand plays a steady quarter-note accompaniment.

C Tpt.

174

174

Org.

This system covers measures 174 to 180. The C Tpt. part includes eighth-note triplets and a trill in measure 175. The Organ part continues with harmonic accompaniment, featuring chords in the right hand and quarter notes in the left hand.

C Tpt.

181

181

Org.

This system covers measures 181 to 187. The C Tpt. part concludes with eighth-note triplets and a trill. The Organ part provides harmonic support with chords and accompaniment, including eighth-note triplets in the right hand and quarter notes in the left hand.