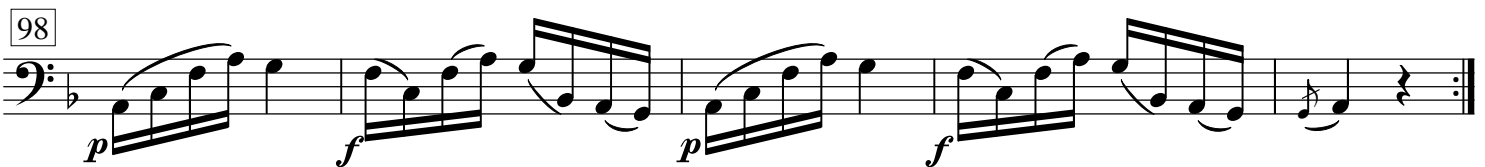
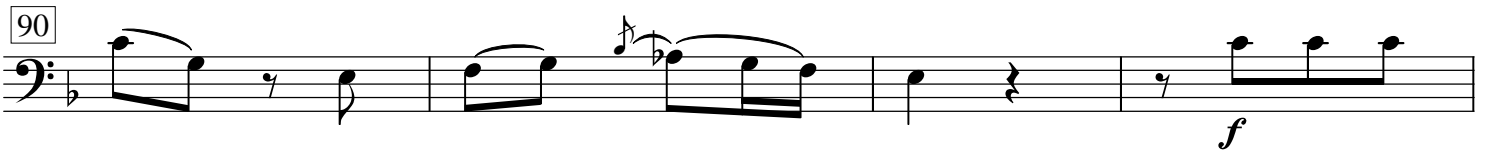
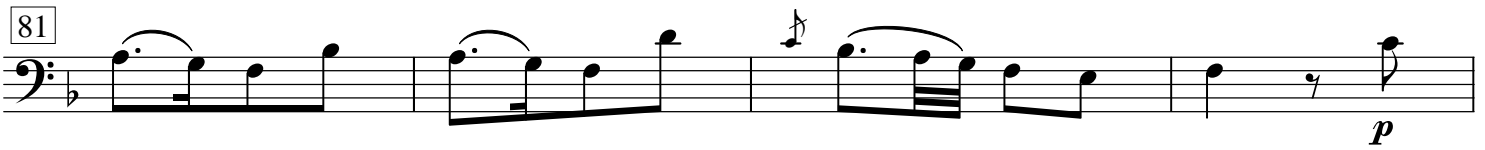
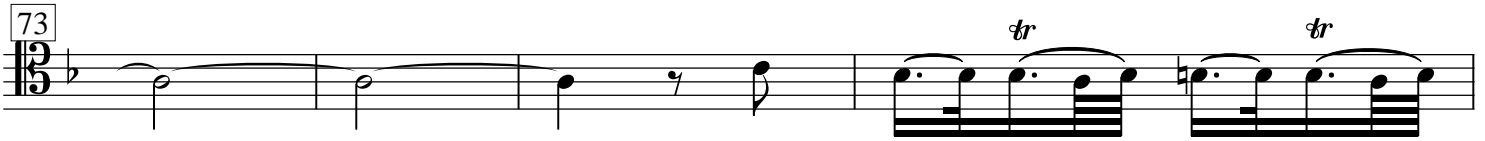
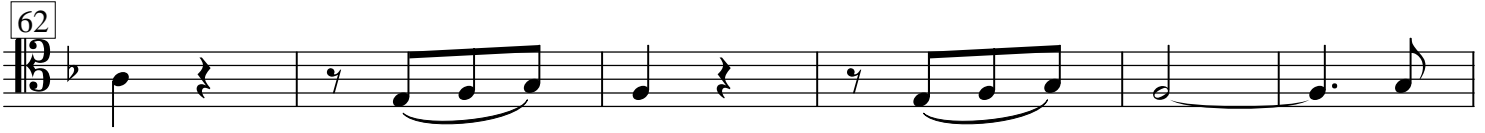


# 4. Sonata F-Dur

*Allegretto*

Joseph Mysliveček

Violoncello 2



Andante

First musical staff, bass clef, common time signature. It begins with a whole rest followed by a series of eighth notes and quarter notes.

Second musical staff, bass clef, 3/8 time signature. It starts with a measure marked '6' and contains eighth notes, quarter notes, and a triplet of eighth notes. A trill is marked over a quarter note.

Third musical staff, bass clef, 3/8 time signature. It starts with a measure marked '8' and features eighth notes, quarter notes, and a trill over a quarter note.

Fourth musical staff, bass clef, 3/8 time signature. It starts with a measure marked '10' and contains eighth notes, quarter notes, and several triplet markings over eighth notes.

Fifth musical staff, bass clef, 3/8 time signature. It starts with a measure marked '12' and includes dynamic markings *f* and *p*. It features eighth notes, quarter notes, and triplet markings.

Sixth musical staff, bass clef, 3/8 time signature. It starts with a measure marked '15' and contains eighth notes, quarter notes, and triplet markings.

Seventh musical staff, bass clef, 3/8 time signature. It starts with a measure marked '18' and features eighth notes, quarter notes, and triplet markings.

Eighth musical staff, bass clef, 3/8 time signature. It starts with a measure marked '20' and contains eighth notes, quarter notes, and a trill over a quarter note.

Ninth musical staff, bass clef, 3/8 time signature. It starts with a measure marked '22' and features eighth notes, quarter notes, and a trill over a quarter note.

Tenth musical staff, bass clef, 3/8 time signature. It starts with a measure marked '24' and includes dynamic marking *p*. It contains eighth notes, quarter notes, and several triplet markings.

Eleventh musical staff, bass clef, 3/8 time signature. It starts with a measure marked '26' and includes dynamic markings *f* and *p*. It features eighth notes, quarter notes, and triplet markings.

