
Homesick

Song by

HENRY F. GILBERT

Medium
Medium, in C

net. .60

THE BOSTON MUSIC COMPANY • BOSTON

New York : G. Schirmer

London : Winthrop Rogers, Ltd.

Homesick

OP. 104

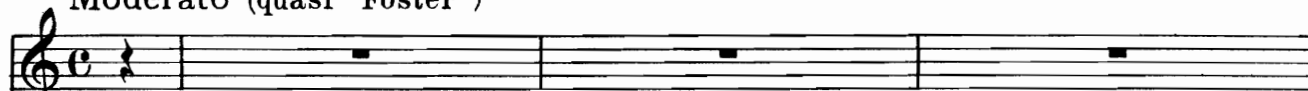
HOWARD WEEDON*

HENRY F. GILBERT



Moderato (quasi "Foster")

Voice



Piano



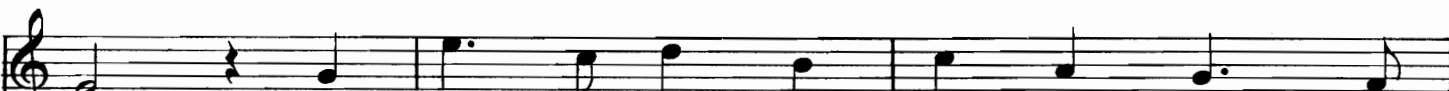
mf



a tempo

mf

col Pedale



go,

All

hot

an' splen - did

roll

its

miles

Of



ped.



* Used with permission

sun - ny sum - mer snow. *p* I long to feel de

warm sweet wind Blow down de riv - er bank, Where

fields of wav - in' sug - ar cane Are grow - in' rich and

rank. I long to see dat Ea - sy World, Where

espressivo no one's in a flur - ry, And where, when it comes *rit.*

espressivo

rit.

rit.

time to die, Dis nig - gah need - nt hur - ry. *a tempo*

a tempo

a tempo

rit.

p

