

FREDERIC RZEWISKI

WHANGGOODDLES

FOR VIOLIN, PIANO, AND PERCUSSION

(1990)

FOR THE ABEL-STEINBERG-WINANT TRIO

Each page > 5" < 15" & 10"

WHANGS DOODLES

Frederic Rzewski (1990)

Double arrow cues new page
Vertical relationships otherwise free
(except where obvious)

for Violin, Percussion, Piano

for the Abel-Steinberg-Witman Trio

Rhythmic values (d, d, d, d) are approximate and relative. Tempi need not be observed strictly.
Signs: \curvearrowright = "semibre"

VIOLIN

(VIOLIN)

PERC

(VIOLIN)

Percussion: Mainly hammered dulcimer (Hackbrett). Other mallet instruments may be used as well where desired. These may sound in another octave (e.g. glockenspiel).

PIANO

(VIOLIN)

(Perc)

(PIANO)

(PIANO)

(PIANO)

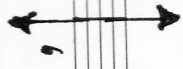
(PIANO)

(PIANO)

(PIANO) (far away)

(PIANO)

(PIANO)



(Pia)

⑤

p

⑤

f

(♩ = 104)

⑤

pp sempre

(Ped) —

⑥ *(d=112)* *mf (slide)* *rit.* *p*

⑥ *(accel.)* *f* *p* *ff*

⑥ *fzrzo* *mf* *(rit.)* *pp*

⑦

Handwritten musical score for exercise 7. It consists of six slurs, each containing a series of notes. The dynamic markings are *f*, *pp*, *f*, *pp*, *f*, and *pp* from left to right. The notes are mostly eighth and sixteenth notes, with some beamed together. The key signature has one flat (B-flat).

⑦

Slow

Handwritten musical score for exercise 7. It consists of six slurs, each containing a series of notes. The dynamic markings are *f*, *p*, *f*, *p*, *f*, and *p* from left to right. The notes are mostly eighth and sixteenth notes, with some beamed together. The key signature has one flat (B-flat).

⑦

Very fast (♩=100)

Handwritten musical score for exercise 7. It consists of six slurs, each containing a series of notes. The dynamic markings are *f*, *mf*, *f*, *mf*, *f*, and *mf* from left to right. The notes are mostly eighth and sixteenth notes, with some beamed together. The key signature has one flat (B-flat).

(rit.)

Handwritten musical score for exercise 7. It consists of six slurs, each containing a series of notes. The dynamic markings are *p*, *p*, *p*, *p*, *p*, and *p* from left to right. The notes are mostly eighth and sixteenth notes, with some beamed together. The key signature has one flat (B-flat).

⑥

(d=112)

mf (slide)

mt.

p

⑥

(accet.)

f

p

f

p

f

p

f

p

⑥

mf

(rit.)

pp

③ (1=72)

pp

cresc.

mf

p

④

p

mf

⑤ (1=72)

pp

legato

mf

p

⑪ Slow, accelerating

p *cresc.* *p* *pp <f*

⑪

p *pp <f*

⑪ Slow, accelerating

f *p* *f* *Ped.* *f*

Handwritten musical notation on a single staff. It begins with a circled number 17 and a tempo marking of 1/52. The notation includes various notes, rests, and dynamic markings: *mf*, *p*, and *ff*. There are also some handwritten annotations like 'x' and '1'.

Handwritten musical notation on a single staff. It starts with a circled number 12 and a tempo marking of (slow). The notation features notes, rests, and dynamic markings: *ff*, *p*, and *pp*. There are also some handwritten annotations like 'x' and '1'.

Handwritten musical notation on a single staff. It begins with a circled number 12 and a tempo marking of (slow). The notation includes notes, rests, and dynamic markings: *p*, *pp*, and *ff*. There are also some handwritten annotations like 'x' and '1'.

⑬ like a butterfly

pp cresc. f rit. pp

⑬ like a butterfly

pp

⑬ like a butterfly

pp cresc. f dim. p

⑭

pizz. arco

f p pp f pp cresc.

⑭

mf p f pp cresc.

⑭ (♩ = 76)

Marching (♩ = 100)

mf p f pp

Ped.

(15) *f* *dim.* *pp* *pp* *f* *pp*

(15) *f* *dim.* *pp* *pp* *f* *pp*

in several different tempi

(15) *P* *mf* *f* *pp* *pp* *f* *pp* *pp* *f* *pp* *pp* *f* *pp*

⑮ *pp*

⑯ *ppp*

⑰ *wispy, irregular*
una corda
(Ped)

①7 A dream.

Handwritten musical score for the first system of 'A dream.' The piece is in G major (one sharp) and 2/4 time. It begins with a treble clef and a key signature of one sharp. The notation includes a series of eighth and sixteenth notes, with dynamic markings *pp*, *cresc.*, *f*, *p*, *f*, *mf*, *mf*, *p*, and *pp*. There are also some slurs and accents over the notes.

①7 A dream.

Handwritten musical score for the second system of 'A dream.' This system continues the melody from the first system. It features a treble clef and a key signature of one sharp. The notation includes quarter and eighth notes, with dynamic markings *p*, *cresc.*, *f*, *mf*, *f*, and *pp*. There are also some slurs and accents over the notes.

①7 A dream.

Handwritten musical score for the third system of 'A dream.' This system includes both a treble and a bass clef. The treble clef part continues the melody with dynamic markings *pp*, *mf*, *f*, *mf*, *f*, *mf*, *p*, and *pp*. The bass clef part consists of a series of chords and single notes, with dynamic markings *f*, *mf*, *p*, and *pp*. There are also some slurs and accents over the notes.

⑮ (1292)

mf p

⑮

p f > p rit. f

⑮

f p cresc. Ped. rit. f

19

Handwritten musical notation for measure 19, featuring a treble clef, a key signature of one flat (B-flat), and a 2/4 time signature. The notation includes a series of notes with various accidentals (sharps, flats, naturals) and dynamic markings such as *f*, *dimin.*, and *pp*. An *accel.* marking is also present.

19

Handwritten musical notation for measure 19, featuring a treble clef and a 2/4 time signature. The notation is mostly blank with a few notes and dynamic markings like *pp*.

19

$\text{♩} = 138$

staccatissimo

pp

arco corda

Handwritten musical notation for measure 19, featuring a bass clef and a 2/4 time signature. The notation is highly detailed, showing a series of notes with various accidentals and dynamic markings such as *pp*, *f*, and *pp*. The word *staccatissimo* is written above the notes, and *arco corda* is written below. A tempo marking $\text{♩} = 138$ is also present.

②①

p *f* *pp*

②②

f *p* *p*

②③

tre corde

p *f* *ped* *pp*

(21)

(21)

(21)

②①

tr hammer
pizz.
f

②②

p
f

(♩=96)

②③

p
cresc.
pp
f

②③ *p* (arco)

②③ (1=92) *f* accelerating

②③

Handwritten musical notation on a single staff. The notation includes various notes, rests, and dynamic markings. At the top right, there is a dynamic marking $pp > f$. In the middle, there is a dynamic marking f . At the bottom right, there is a dynamic marking ppp . The notation is dense and includes many accidentals (sharps and flats). At the bottom left, there is a circled number 24 and the text $(1=138)$.

Handwritten musical notation on a single staff. It features a dynamic marking f at the top right and a dynamic marking p at the bottom right. The notation includes notes and rests.

Handwritten musical notation on a single staff. It features a circled number 24 at the bottom left and a treble clef at the bottom right.

Handwritten musical notation on a single staff. It features a dynamic marking pp at the top right and a treble clef at the bottom right. The notation includes notes and rests.

24

Handwritten musical notation on a single staff. It features a treble clef at the bottom right and a large bracket-like symbol at the bottom left.

25

Handwritten musical notation for exercise 25, top staff. It shows a treble clef, a key signature of one flat (B-flat), and a common time signature. The notation includes a series of chords and melodic lines with dynamic markings like 'P' and 'etc.'.

25

Handwritten musical notation for exercise 25, middle staff. It shows a treble clef, a key signature of one flat (B-flat), and a common time signature. The notation includes a series of chords and melodic lines with dynamic markings like 'P' and 'etc.'.

arco con rubato

25

Handwritten musical notation for exercise 25, bottom staff. It shows a treble clef, a key signature of one flat (B-flat), and a common time signature. The notation includes a series of chords and melodic lines with dynamic markings like 'P', 'pp', and 'legato'.

P una corda

legato

②6

②6

②6

tre corde

(27) (♩=96)

mf

f

(27)

p *mp* *p*

f

(27)

mp

d=60

f

(not exactly together with percussion)

Handwritten musical notation on a single staff, starting with a circled number 28. The notation includes a treble clef, a key signature of one flat (Bb), and a common time signature (C). The music features a series of chords and melodic lines, with some notes marked with 'x' and a dynamic marking 'f' at the end. The piece concludes with a double bar line and repeat arrows.

(not exactly together with violin)

Handwritten musical notation on a single staff, starting with a circled number 28. The notation includes a treble clef, a key signature of one flat (Bb), and a common time signature (C). The music features a series of chords and melodic lines, with some notes marked with 'x' and a dynamic marking 'f' at the beginning. The piece concludes with a double bar line and repeat arrows.

freely

Handwritten musical notation on a single staff, starting with a circled number 28. The notation includes a treble clef, a key signature of one flat (Bb), and a common time signature (C). The music features a series of chords and melodic lines, with some notes marked with 'x' and a dynamic marking 'f' at the beginning. The piece concludes with a double bar line and repeat arrows, and is marked with '(trém.)' at the end.

②9 free and light, suddenly changing tempi

②9

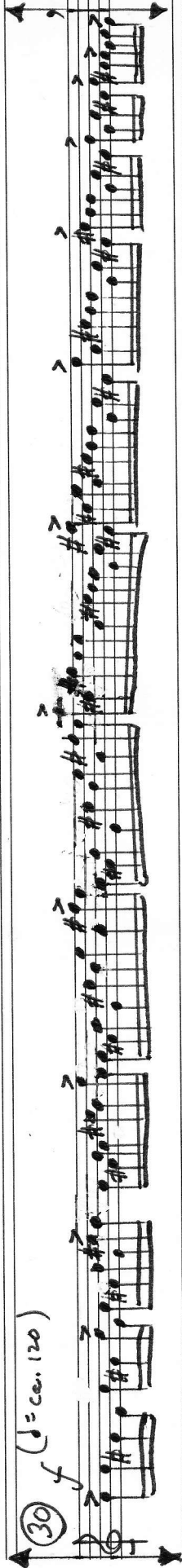
②9

30

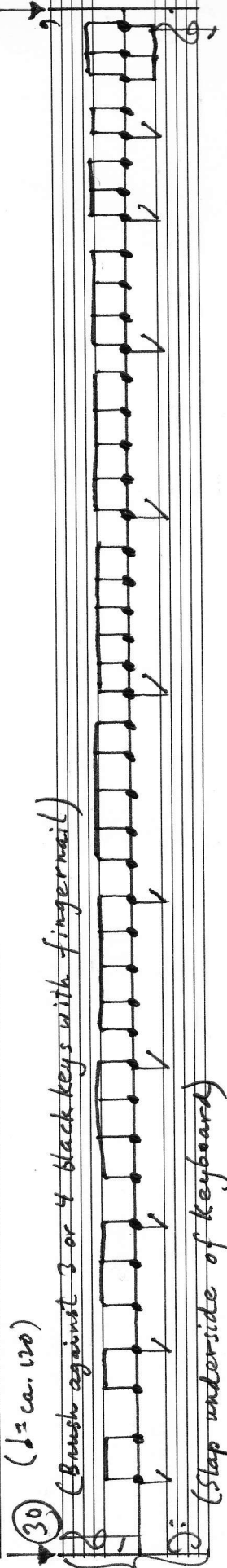


9

30



30



(Brush against 3 or 4 black keys with fingernail)

(Stop underside of keyboard)

31

31

31

Handwritten musical score for exercise 33, top system. The notation is on a single staff with a treble clef and a key signature of two flats (B-flat and E-flat). The exercise begins with a dynamic marking of *f* (forte). The music consists of a series of chords and melodic lines, with a *dim.* (diminuendo) marking appearing in the middle. The piece concludes with a *p* (piano) dynamic marking and a *rit.* (ritardando) marking.

Handwritten musical score for exercise 33, middle system. It features a treble clef and a key signature of two flats. The notation is sparse, showing a few notes and rests, with a *p* (piano) dynamic marking.

Handwritten musical score for exercise 33, bottom system. The notation is on a single staff with a treble clef and a key signature of two flats. The exercise begins with a dynamic marking of *f* (forte). The music consists of a series of chords and melodic lines, with a *dim.* (diminuendo) marking appearing in the middle. The piece concludes with a *p* (piano) dynamic marking and a *rit.* (ritardando) marking.

③5

③5

d = 84

③5

34

pizz. p

f

pp

c

35

pp

ff

ppp

c

36

c

Handwritten musical notation on a single staff, labeled (37). It begins with a treble clef, a key signature of one sharp (F#), and a common time signature (C). The notation includes a series of notes with slurs and accents, starting with a forte (*f*) dynamic. Below the staff, there are several guitar chord diagrams, some with a *pp* (pianissimo) dynamic marking. The piece concludes with a final chord diagram and a double bar line.

Handwritten musical notation on a single staff, labeled (37). It begins with a treble clef, a key signature of two flats (Bb, Eb), and a common time signature (C). The notation includes a series of notes with slurs and accents, starting with a forte (*f*) dynamic. Below the staff, there are several guitar chord diagrams, some with a *pp* dynamic marking. The piece concludes with a final chord diagram and a double bar line.

Handwritten musical notation on a single staff, labeled (37). It begins with a treble clef, a key signature of one sharp (F#), and a common time signature (C). The notation includes a series of notes with slurs and accents, starting with a forte (*f*) dynamic. Below the staff, there are several guitar chord diagrams, some with a *pp* dynamic marking. The piece concludes with a final chord diagram and a double bar line.

Handwritten musical notation on a single staff. The piece begins with a circled measure number 38. The notation includes a treble clef, a 4/4 time signature, and a key signature of one sharp (F#). The music features a variety of note values, including quarter, eighth, and sixteenth notes, as well as rests. Dynamic markings include *f* (forte) and *p* (piano). The notation is written in a fluid, handwritten style.

Handwritten musical notation on a single staff. The piece begins with a circled measure number 38. The notation includes a treble clef, a 4/4 time signature, and a key signature of one sharp (F#). The music features a variety of note values, including quarter, eighth, and sixteenth notes, as well as rests. Dynamic markings include *f* (forte) and *p* (piano). The notation is written in a fluid, handwritten style.

Handwritten musical notation on two staves. The piece begins with a circled measure number 38. The notation includes treble clefs, a 4/4 time signature, and a key signature of one sharp (F#). The music features a variety of note values, including quarter, eighth, and sixteenth notes, as well as rests. Dynamic markings include *f* (forte), *pp* (pianissimo), and *p* (piano). The notation is written in a fluid, handwritten style. A circled measure number 38 is present at the beginning of the first staff.

39

mf
dim.
pp

39

39

♩ = 72

espressivo

crac.

sf

pp

dimin.

pp



40



40

Handwritten musical score on a grand staff (treble and bass clefs). The score includes various musical notations such as notes, rests, and dynamic markings.

- Tempo marking: $\text{♩} = 112$
- Dynamic markings: *mp*, *f*, *rit.*, *mf*, *pp*
- Key signature: One sharp (F#)
- Staff 1 (Treble Clef): Contains a complex melodic line with many beamed notes and rests.
- Staff 2 (Bass Clef): Contains a bass line with notes and rests, often mirroring the treble staff.

Handwritten musical notation on a single staff. It begins with a circled number '41' and a dynamic marking 'p'. The tempo is indicated as $\text{♩} = 104$. The notation consists of a series of eighth and sixteenth notes, many with accidentals (flats and naturals). There are several 'x' marks above the notes, and a 'cresc.' marking below the staff. The piece ends with a double bar line.

Handwritten musical notation on a single staff. It begins with a circled number '41' and a dynamic marking 'p'. The notation consists of a series of eighth and sixteenth notes with various accidentals. There are 'mf' and 'pp' markings below the staff. The piece ends with a double bar line.

Handwritten musical notation on a single staff. It begins with a circled number '41' and a dynamic marking 'p'. The tempo is indicated as $\text{♩} = 84$. The notation includes a complex sequence of notes with many accidentals, including a section with a guitar-like fretboard diagram. There are 'Kt' markings above the staff and 'Red' below. The piece ends with a double bar line.

42

pizz
p

arco
f

mit. —
dim.

f

42

f

42

f

p

cresc.

f

Handwritten musical notation on a five-line staff. The notation includes a circled measure number "43" at the beginning. The piece starts with a dynamic marking of *f* (forte). The melody consists of several measures with notes, accidentals (sharps and flats), and slurs. A *dim.* (diminuendo) marking is present. The notation includes various rhythmic values and phrasing slurs. The piece concludes with a *pp* (pianissimo) dynamic marking.

Handwritten musical notation on a five-line staff. It begins with a circled measure number "43" and a treble clef. The notation is sparse, showing a few notes and a dynamic marking of *p* (piano).

Handwritten musical notation on a five-line staff. It begins with a circled measure number "43" and a treble clef. The notation shows a few notes, including a sharp sign, and a dynamic marking of *p* (piano).

44

Handwritten musical notation for measures 44-45. Measure 44 contains a piano introduction with a forte (f) dynamic. Measure 45 contains a melodic line starting with a half note G4, followed by quarter notes A4, B4, and C5.

44

Handwritten musical notation for measures 44-45. Measure 44 contains a piano introduction with a forte (f) dynamic. Measure 45 contains a melodic line starting with a half note G4, followed by quarter notes A4, B4, and C5.

44

♩ = 80

Handwritten musical notation for measures 44-45. Measure 44 contains a piano introduction with a piano (p) dynamic. Measure 45 contains a melodic line starting with a half note G4, followed by quarter notes A4, B4, and C5. The notation includes dynamic markings: *accel.*, *cresc.*, *faster, freely*, and *f*. The piece concludes with a piano introduction marked *p*.

45

espressivo

45

45

$\text{♩} = 72$

Handwritten musical notation on a five-line staff. It begins with a circled number '46' and a treble clef. The first measure contains a single note on the second line, marked with a 'p' (piano). The second measure is a whole note chord consisting of a treble clef, a sharp sign, and notes on the second, third, and fourth lines, marked with a 'ff' (fortissimo). The third measure is a whole note chord with notes on the second, third, and fourth lines, marked with a 'ppp' (pianissimo) and the text '(non vibr.)'. The fourth measure is a whole note chord with notes on the second, third, and fourth lines, marked with a 'ppp' and the text '(vibr.)'. The fifth measure is a whole note chord with notes on the second, third, and fourth lines, marked with a 'ppp' and the text 'sul RE'. The sixth measure is a whole note chord with notes on the second, third, and fourth lines, marked with a 'ppp' and the text 'A'. The seventh measure is a whole note chord with notes on the second, third, and fourth lines, marked with a 'ppp' and the text 'A'. The staff ends with a double bar line and a repeat sign.

Handwritten musical notation on a five-line staff. It begins with a circled number '46' and a treble clef. The first measure contains a single note on the second line, marked with a 'p' (piano). The second measure is a whole note chord consisting of a treble clef, a sharp sign, and notes on the second, third, and fourth lines, marked with a 'ff' (fortissimo). The third measure is a whole note chord with notes on the second, third, and fourth lines, marked with a 'ppp' (pianissimo) and the text '(non vibr.)'. The fourth measure is a whole note chord with notes on the second, third, and fourth lines, marked with a 'ppp' and the text '(vibr.)'. The fifth measure is a whole note chord with notes on the second, third, and fourth lines, marked with a 'ppp' and the text 'sul RE'. The sixth measure is a whole note chord with notes on the second, third, and fourth lines, marked with a 'ppp' and the text 'A'. The seventh measure is a whole note chord with notes on the second, third, and fourth lines, marked with a 'ppp' and the text 'A'. The staff ends with a double bar line and a repeat sign.

Handwritten musical notation on a five-line staff. It begins with a circled number '46' and a treble clef. The first measure contains a single note on the second line, marked with a 'p' (piano). The second measure is a whole note chord consisting of a treble clef, a sharp sign, and notes on the second, third, and fourth lines, marked with a 'mp' (mezzo-piano) and the text 'A'. The third measure is a whole note chord with notes on the second, third, and fourth lines, marked with a 'pp' (pianissimo) and the text 'A'. The fourth measure is a whole note chord with notes on the second, third, and fourth lines, marked with a 'pp' and the text 'A'. The fifth measure is a whole note chord with notes on the second, third, and fourth lines, marked with a 'pp' and the text 'A'. The sixth measure is a whole note chord with notes on the second, third, and fourth lines, marked with a 'pp' and the text 'A'. The seventh measure is a whole note chord with notes on the second, third, and fourth lines, marked with a 'pp' and the text 'A'. The eighth measure is a whole note chord with notes on the second, third, and fourth lines, marked with a 'pp' and the text 'A'. The ninth measure is a whole note chord with notes on the second, third, and fourth lines, marked with a 'pp' and the text 'A'. The tenth measure is a whole note chord with notes on the second, third, and fourth lines, marked with a 'pp' and the text 'A'. The staff ends with a double bar line and a repeat sign.

④7

pp

mf

dim.

p

④7

pp

p

cresc.

mf

p

④7

pp

dim.

accels.

cresc.

mf.

Handwritten musical notation on a five-line staff. It begins with a circled number '48' and a treble clef. The notation includes notes with accidentals (sharps and flats) and dynamic markings: 'pizz' (pizzicato), 'rit.' (ritardando), and 'arco' (arco). A double bar line is present. To the right of the staff, there is a diagram of a guitar fretboard with dots representing finger positions and a dynamic marking 'f'. Above the staff, there is a double-headed vertical arrow and the text '(sord.)' with an arrow pointing to the right.

Handwritten musical notation on a five-line staff. It begins with a circled number '48' and a treble clef. The notation consists of a series of notes with stems, some with accidentals. A double bar line is present. Below the staff, there is a diagram of a guitar fretboard with dots representing finger positions and a dynamic marking 'f'.

Handwritten musical notation on a five-line staff. It begins with a circled number '48' and a treble clef. The notation includes notes with accidentals and dynamic markings: 'pp' (pianissimo), 'f' (forte), and 'pp' (pianissimo). A double bar line is present. Below the staff, there is a diagram of a guitar fretboard with dots representing finger positions and a dynamic marking 'pp'. To the right of the staff, there is a diagram of a guitar fretboard with dots representing finger positions and a dynamic marking 'f'. Above the staff, there is a double-headed vertical arrow.

48 con sord.

49

49

50 (con sord.)

P espressivo; suggestive of Indian violin-playing, with microtonal slides around each note

50

ppp

(sempre)

50

51 (con sord.)

Handwritten musical notation for 'con sord.' (con sordina). It consists of three measures on a grand staff. The first measure starts with a treble clef, a key signature of one sharp (F#), and a common time signature. It contains a half note G4 with a dynamic marking of *mp*. The second measure contains a half note chord consisting of F#4, G4, and A4, with a dynamic marking of *f*. The third measure contains a half note chord consisting of F#4, G4, and A4, with a dynamic marking of *mf*. Below the staff, there is a dynamic marking of *p* and a fermata over a whole note G4. To the right of the staff, there is a dynamic marking of *pp* and a fermata over a whole note chord consisting of F#4, G4, and A4. The text '(via sord.)' is written to the right of the final measure.

(via sord.)

51

Handwritten musical notation for measure 51. It consists of two staves. The top staff has a treble clef, a key signature of one sharp (F#), and a common time signature. It contains a half note G4. The bottom staff contains a whole note chord consisting of F#4, G4, and A4. There is a fermata over the whole note chord in the bottom staff.

51

Handwritten musical notation for measure 51. It consists of two staves. The top staff has a treble clef, a key signature of one sharp (F#), and a common time signature. It contains a half note G4. The bottom staff contains a whole note chord consisting of F#4, G4, and A4. There is a fermata over the whole note chord in the bottom staff. The text 'ppp una corda' is written above the staff, and 'Ped.' is written below the staff.

ppp una corda

Ped.

senza sord.

52

mp

cresc.

f

p

pp

52

f

dim.

52

acc.

cresc.

mf

dim.

pp

Ped.

rit. - -

53

53

54 $\text{♩} = 104$ *f* *turn* *turn* *dim.* *(pp)*

54 *gliss. with a piece of plastic from middle of string to bridge* *(f)*

54 *f* *turn* *dim.* *(pp)* *Ped.*

♩ = 104
(55)
p
Country fiddling, no vibrato

♩ = 104
(55)
p

♩ = 104
(55)
p
marcato

Handwritten musical notation for measures 55 and 56. The notation is on a single staff with a treble clef and a key signature of one sharp (F#). Measure 55 begins with a circled measure number '55' and a dynamic marking 'mf'. The melody consists of eighth and sixteenth notes with various slurs and ties. Measure 56 continues the melodic line with similar rhythmic patterns and slurs.

Handwritten musical notation for measures 55 and 56, middle system. This system contains two staves. The upper staff continues the melodic line from the first system. The lower staff contains a complex rhythmic accompaniment with many sixteenth notes, some beamed together, and some notes with stems pointing downwards. A circled measure number '56' is at the beginning, and a dynamic marking 'mf' is present.

Handwritten musical notation for measures 55 and 56, bottom system. This system contains two staves. The upper staff continues the melodic line. The lower staff contains a complex rhythmic accompaniment. A circled measure number '56' is at the beginning, and a dynamic marking 'mf' is present. A handwritten note at the bottom right of the system reads "(sharp and strong in left hand)".

Handwritten musical score, first system. The staff begins with a circled measure number "57". The music is in treble clef with a key signature of one sharp (F#). It starts with a dynamic marking of *mf*. The melody consists of eighth and sixteenth notes. A *cresc.* marking appears. A long note is followed by a fermata. The piece concludes with a *rit.* marking.

Handwritten musical score, second system. The staff begins with a circled measure number "57". The music is in treble clef with a key signature of one sharp (F#). It starts with a dynamic marking of *mf*. The melody consists of eighth and sixteenth notes. A *cresc.* marking appears. A long note is followed by a fermata. The piece concludes with a *rit.* marking.

Handwritten musical score, third system. The staff begins with a circled measure number "57". The music is in treble clef with a key signature of one sharp (F#). It starts with a dynamic marking of *mf*. The melody consists of eighth and sixteenth notes. A *cresc.* marking appears. A long note is followed by a fermata. The piece concludes with a *rit.* marking.

58

58

pp

poco cresci.

58

pp

f

poco cresci.

quar

59

o

59

mf rit. dim.

59

mf (legato) rit. dim. pp

Handwritten musical notation on a single staff. It begins with a treble clef, a key signature of one sharp (F#), and a tempo marking of 60. The music consists of several measures of chords and melodic lines, with dynamic markings *mf* and *f*. A large bracket spans the middle section, labeled *accel. e cresc.*. The piece concludes with a *P* (piano) marking.

Handwritten musical notation on a single staff. It begins with a treble clef, a key signature of one sharp (F#), and a tempo marking of 60. The notation is minimal, showing a few notes and rests.

Handwritten musical notation on a grand staff (treble and bass clefs). It begins with a treble clef, a key signature of one sharp (F#), and a tempo marking of 60. The music features complex chordal textures and melodic lines. Dynamic markings include *mf*, *pp*, and *Ped* (pedal). A section is marked *slow* and *accel. e cresc.*. The notation includes many accidentals and slurs.

⑥1

⑥1

⑥1

impetuously

cresc.

then then

f

Handwritten musical notation on a single staff. It begins with a treble clef and a circled number 62. The notation includes a few notes, a fermata, and a double bar line with repeat arrows. A common time signature 'C' is written below the staff.

Handwritten musical notation on a single staff. It begins with a treble clef and a circled number 62. The notation includes a series of notes, a dynamic marking 'p', a 'cresc.' marking, and a final measure with a fermata and a double bar line with repeat arrows.

Handwritten musical notation on two staves. The top staff begins with a treble clef and a circled number 63. The bottom staff begins with a bass clef and a circled number 63. The notation includes various notes, rests, and dynamic markings such as 'p', 'mp', and 'pp'. It concludes with a double bar line and repeat arrows.

63

63

63

⑥4 $\text{♩} = 92$, nostalgically

mp p dim. pp

⑥4 $\text{♩} = 92$

mp pp

⑥4 $\text{♩} = 92$, nostalgically

mp p dim. pp

♩ = 104
 65 *pizz.*
mf

arco
f

♩ = 104
 65 *mf*

f

♩ = 104
 65 *mf*
marcato

f
marcato

(♩ = 92)

pp subito

(♩ = 92)

pp subito

(♩ = 92)

pp subito

(67)

(67)

(67) una corda

Handwritten musical notation on a single staff, starting with a circled measure number 68. The notation includes a series of chords and melodic lines with various accidentals (sharps, naturals, flats) and dynamic markings such as *f*, *p*, and *ff*. A double bar line is present near the end of the staff.

Handwritten musical notation on a single staff, starting with a circled measure number 69. The notation features a series of chords and melodic lines with various accidentals and dynamic markings including *f*, *pp*, and *ff*. A double bar line is present near the end of the staff.

Handwritten musical notation on a single staff, starting with a circled measure number 70. The notation includes a series of chords and melodic lines with various accidentals and dynamic markings such as *f* and *pp*. A double bar line is present near the end of the staff. The text "(tre corde)" is written below the staff.

69

69

69

⑥9

⑥9

⑥9

Handwritten musical notation on a single staff, starting with a circled number 70. The notation includes a treble clef, a key signature of one sharp (F#), and a common time signature (C). The piece begins with a dynamic marking of *f* (forte). The melody consists of several measures of eighth and sixteenth notes, some with slurs and accents. A measure with a circled *b* (basso) and a slur is followed by a measure with a circled *c* (crescendo) and a slur. The piece concludes with a dynamic marking of *p* (piano) and a double bar line.

Handwritten musical notation on a single staff, starting with a circled number 70. The notation includes a treble clef, a key signature of one sharp (F#), and a common time signature (C). The piece begins with a dynamic marking of *f* (forte). The melody consists of several measures of eighth and sixteenth notes, some with slurs and accents. A measure with a circled *tem* (tempo) and a slur is followed by a measure with a circled *dim.* (diminuendo) and a slur. The piece concludes with a dynamic marking of *p* (piano) and a double bar line.

Handwritten musical notation on a single staff, starting with a circled number 70. The notation includes a treble clef, a key signature of one sharp (F#), and a common time signature (C). The piece begins with a dynamic marking of *f* (forte). The melody consists of several measures of eighth and sixteenth notes, some with slurs and accents. A measure with a circled *dim.* (diminuendo) and a slur is followed by a measure with a circled *p* (piano) and a slur. The piece concludes with a dynamic marking of *f* (forte) and a double bar line.

Handwritten musical score for guitar, system 71. It consists of a single staff with a treble clef and a key signature of one sharp (F#). The piece begins with a dynamic marking of *p* (piano) and a *f* (forte) marking. The notation includes various chords and melodic lines, with some notes marked with accents. The system concludes with a double bar line and a repeat sign.

Handwritten musical score for guitar, system 71. It consists of a single staff with a treble clef and a key signature of one sharp (F#). The piece begins with a dynamic marking of *p* (piano) and a *f* (forte) marking. The notation includes various chords and melodic lines, with some notes marked with accents. The system concludes with a double bar line and a repeat sign.

Handwritten musical score for guitar, system 71. It consists of a single staff with a treble clef and a key signature of one sharp (F#). The piece begins with a dynamic marking of *p* (piano) and a *f* (forte) marking. The notation includes various chords and melodic lines, with some notes marked with accents. The system concludes with a double bar line and a repeat sign.

72

p *f* *pp*

72

f *pp*

72

pp *p* *f* *pp*

pp una corda, no pedal

73 $\text{♩} = 108$
ppp

73 $\text{♩} = 108$
ppp
 (with the wooden part of the stick)

73
ppp
 (Ped) una corda

72

$\text{♩} = 96$

ppp

73

$\text{♩} = 84$

ppp

74 (una corda)

(ppp)

(Ped.)

75

pp

75

pp

75 (una corda)

pp (Ped.)

gr

76

rit.

f

b.i.

76

76 (tre corde) legato

f

legato

(accel.)

b.i.

Handwritten musical notation on a single staff, starting with a treble clef and a circled number 77. The piece begins with a forte (f) dynamic. The melody consists of several measures of music, including a sequence of eighth notes and a final measure with a half note.

Handwritten musical notation on a single staff, starting with a treble clef and a circled number 77. The piece begins with a forte (f) dynamic. The notation includes a series of notes with slurs and ties, and a section marked "(rit.)" indicating a ritardando. The piece concludes with a final chord.

Handwritten musical notation on a single staff, starting with a treble clef and a circled number 77. The piece begins with a forte (f) dynamic. The notation includes a series of notes with slurs and ties, and a section marked "(rit.)" indicating a ritardando. The piece concludes with a final chord.

Try to sound like a mouth-harmonica.

$\text{♩} = 52$

no vibrato

Handwritten musical notation for measures 78-81. Measure 78 starts with a treble clef and a key signature of one flat. It contains a half note G4 with an 'X' above it, followed by a quarter note G4 with an 'X' above it. Measure 79 contains a half note G4 with an 'X' above it, followed by a quarter note G4 with an 'X' above it. Measure 80 contains a half note G4 with an 'X' above it, followed by a quarter note G4 with an 'X' above it. Measure 81 contains a half note G4 with an 'X' above it, followed by a quarter note G4 with an 'X' above it. The notation includes dynamic markings *mp* and *sf*, and a handwritten instruction "(slide from one note to another)".

$\text{♩} = 100$

78

Handwritten musical notation for measures 78-81. Measure 78 starts with a treble clef and a key signature of one flat. It contains a half note G4, followed by a quarter note G4, and a quarter note G4. Measure 79 contains a half note G4, followed by a quarter note G4, and a quarter note G4. Measure 80 contains a half note G4, followed by a quarter note G4, and a quarter note G4. Measure 81 contains a half note G4, followed by a quarter note G4, and a quarter note G4. The notation includes dynamic markings *p* and *cresc.*, and a handwritten instruction "Them." above the notes.

78

Handwritten musical notation for measures 78-81. Measure 78 starts with a treble clef and a key signature of one flat. It contains a half note G4. Measure 79 contains a half note G4. Measure 80 contains a half note G4. Measure 81 contains a half note G4. The notation includes dynamic markings *p* and *cresc.*, and a handwritten instruction "Them." above the notes.

79

79

79

Handwritten musical notation on a single staff. It begins with a treble clef and a circled tempo marking of 80. The notation includes several measures with notes, rests, and dynamic markings: *pp*, *pp*, *sf*, *pp*, and *pp*. A slur is placed over a group of notes with the instruction "like sobbing". A fermata is placed over a note with the instruction "like crying". The staff ends with a double bar line and repeat arrows.

Handwritten musical notation on a single staff. It begins with a treble clef and a circled tempo marking of 80. The notation consists of a few notes and rests, followed by a double bar line and repeat arrows.

Handwritten musical notation on a single staff. It begins with a treble clef and a circled tempo marking of 80. The notation includes a long phrase with notes and rests, followed by a section with a slur and the instruction "legato, no pedal". The staff ends with a double bar line and repeat arrows.

81

f subito

81

f

tr

trm.

dim.

tr

p

81

mf

p

pp

Handwritten musical notation on a single staff. It begins with a circled measure number 82. The notation includes a treble clef, a key signature of one flat (Bb), and a dynamic marking of *pp*. The music consists of several measures of eighth and sixteenth notes, some with 'x' marks above them. A *rit.* (ritardando) marking is present above a series of notes. The piece concludes with a double bar line and repeat arrows.

Handwritten musical notation on a single staff. It begins with a circled measure number 82. The notation includes a treble clef, a key signature of one flat (Bb), and a dynamic marking of *pp*. The music consists of several measures of eighth and sixteenth notes, some with 'x' marks above them. The piece concludes with a double bar line and repeat arrows.

Handwritten musical notation on a single staff. It begins with a circled measure number 82. The notation includes a treble clef, a key signature of one flat (Bb), and a dynamic marking of *pp*. The music consists of several measures of eighth and sixteenth notes, some with 'x' marks above them. A *rit.* (ritardando) marking is present above a series of notes. The piece concludes with a double bar line and repeat arrows.

83

83

83

mf

f

accel.

rit.

84 Lively

84 Lively

84 Lively

85 Meditative

Handwritten musical notation for exercise 85, Meditative. The notation is on a single staff with a treble clef and a key signature of one flat. It begins with a series of notes connected by a long horizontal line, with dynamic markings 'f' and 'pp' and the instruction 'trém.'.

85 Meditative

Handwritten musical notation for exercise 85, Meditative. The notation is on a single staff with a treble clef and a key signature of one flat. It begins with a series of notes connected by a long horizontal line, with dynamic markings 'f', 'pp', and the instruction 'trém.'.

85 Meditative

Handwritten musical notation for exercise 85, Meditative. The notation is on a single staff with a treble clef and a key signature of one flat. It begins with a series of notes connected by a long horizontal line, with dynamic markings 'pp', 'mf', 'f', and the instruction 'trém.'.

86

(sord.)

87

88

♩ = 104

tra corda

87 *con-sonant*
pp like a pair of birds

87 like a pair of birds

87

$\text{♩} = 120$
88 (con sord.) Country fiddling again
pp leggerissimo

$\text{♩} = 120$
88
ppp

$\text{♩} = 120$
88
una corda

♩ = 80 (con sord.)

85 *mp* *espressivo*

87 ♩ = 80

85 ♩ = 80

pp *una corda*

mezzo

mf *p*

30

(via sord.)

30

30

Carelessly, impulsively

the corda mf cresc.

f cresc.

turn turn

Ped.

91 (repeat each figure ad lib.)

91 *trém.*

91 (repeat each figure ad lib.)

una corda
no pedal

f

Ped → the corde

92 *f* *dim.* *p*

92 *f* *dim.* *p*

92 *f* *dim.* *p*

93

p

cresc.

dim.

p

(i) *turnover*

93

p

turnover

cresc.

dim.

p

f

93

p

cresc.

dim.

p

f

gradually add Pedal - - -

(No Ped.)

94 Presto (♩=152)

pizz.

94 Presto (♩=152)

94 Presto (♩=152)

95 arco $\delta = 126$
P subito
cresc.
f

95 $\delta = 126$
P subito
f
P
f
tr

95 $\delta = 126$
P subito
(Ped) legato
cresc.
f

96 *piu mosso* ($\text{♩} = 138$)

96 *tr* *piu mosso* ($\text{♩} = 138$)

96 *8va* *piu mosso* ($\text{♩} = 138$)

ped

97 *ancora più mosso (♩=144)*
ff furioso

97 *ancora più mosso (♩=144)*
ff furioso

97 *ancora più mosso (♩=144)*
ff furioso

98

Spaced

pp subito

p

pp

98

Spaced

pp subito

cresc.

mp

dim.

pp

98

Spaced

pp subito

mp

p

p

una corda

99

bibbidi-bidi

f

mp

p < f

f

ff

99

pp

f

p

f

pp

ff

99 *espressivo, f ca. 96*

una corda

mf

p

mf

p

f

ped

ff

Handwritten musical notation on a five-line staff. It begins with a treble clef, a common time signature (C), and a fermata. Below the staff, there is a circled number "100".

Handwritten musical notation on a five-line staff. It starts with a circled "100", a treble clef, and a key signature of one sharp (F#). The notation includes a series of notes with stems and beams, some with accents. Performance markings include "trém.", "ff sempre", "accel.", "rit.", "ad lib.", and "ff". A wavy line above the staff is labeled "tremolo".

Handwritten musical notation on a five-line staff. It begins with a circled "100", a treble clef, and a common time signature (C). The notation includes a few notes with stems and beams, followed by a fermata.

101

101

101

♩ = 128

f

X

X

X

X

X

X

X

X

X

X

X

X

(trains)
Ped.

102

sul re

ppp

102

(pluck with finger)

(harmonics)

102

(whistle)

13120

103 *Sul. ve* *p*

pizz. *mp*

103 *p* *t=120*

103 *t=120*

104 $\downarrow = 112$

rit.

109 $\downarrow = 112$

rit.

107 $\downarrow = 112$

rit.

f una corda

105 *Dynamily*
(col legno)
ppp

105 *Dynamily*
with wooden side of beater
ppp

105 *Dynamily*
ppp subito

(Ped)

106

Handwritten musical notation for measure 106. It features a treble clef, a key signature of one sharp (F#), and a single note on the first line of the staff. A fermata is placed over the note, and a dynamic marking of *f* is written below the staff.

106

Handwritten musical notation for measure 106. It features a treble clef, a key signature of one sharp (F#), and a single note on the first line of the staff. A fermata is placed over the note, and a dynamic marking of *f* is written below the staff.

101

Handwritten musical score for measures 101-106. The score is written on a grand staff (treble and bass clefs). Measure 101 starts with a treble clef, a key signature of one sharp (F#), and a dynamic marking of *f*. The notation includes various rhythmic values and accidentals. Measure 102 has a dynamic marking of *f* and the instruction "tre corde". Measure 103 has a dynamic marking of *f* and the instruction "accel.". Measure 104 has a dynamic marking of *f* and the instruction "D. messa.". Measure 105 has a dynamic marking of *f* and the instruction "D. messa.". Measure 106 has a dynamic marking of *f* and the instruction "D. messa.". The score concludes with a double bar line and repeat dots.

(Each trill a different duration. Play in any octave. Fade out second [after piano].)

108

108 (Play after violin. Each trill a different duration. Play in any octave. Fade out last.)

108 (Play after percussion. Each trill a different duration. Play in any octave. Fade out first.)

WANG DOODLES: APPENDIX

79.

The Big Rock Candy Mountains

Moderately fast

Piano arrangement by Charles and Ruth Seeger

INTRODUCTION

One eye - ning, as the sun went down And the
jun - gle fires were burn - ing. Down the track came a ho - bo,
burn - ning. And he said, "Boys, I'm not

run - ning. I'm head - ed for a land that's far a - way Be -
side the crys - tal foun - tains. I'll see you all this
com - ing fall In the Big Rock Can - dy Moun - tains.

STANZAS

In the Big Rock Candy Mountains There's a land that's fair and bright, Where the

hand-outs grow on bushes— And you sleep out every night, Where the

box-cars all are empty And the sunshines every day — O the

birds and the bees and the cigarette trees, The rocky springs where the

whang doo-dle sings In the Big Rock Candy Mountains

2. In the Big Rock Candy Mountains,
All the cops have wooden legs,
And the bulldogs all have rubber teeth
And the hens lay softboiled eggs.
The farmer's trees are full of fruit
And the barns are full of hay.
O I'm bound to go, where there ain't no snow,
Where the sleet don't fall and the wind don't blow
In the Big Rock Candy Mountains.

3. In the Big Rock Candy Mountains,
You never change your socks,
And the little streams of alkyhol
Come trickling down the rocks.
The shacks all have to tip their hats
And the railroad bulls are blind,
There's a lake of stew and of whiskey, too,
And you can paddle all around in a big canoe
In the Big Rock Candy Mountains.

4. In the Big Rock Candy Mountains,
The jails are made of tin,
And you can bust right out again,
As soon as they put you in.
There ain't no shorthanded shovels
No axes, saws or picks—
I'm a-going to stay, where you sleep all day,
Where they boiled in oil the inventor of toil
In the Big Rock Candy Mountains.