

Violoncello

Felix Mendelssohn Bartholdy

Sinfonia II D-Dur

Sinfonia II D-Dur

Felix Mendelssohn Bartholdy

Allegro

5

f

Measures 1-4: Bass clef, D major key signature, 4/4 time signature. The music begins with a forte (*f*) dynamic. It features a series of eighth-note patterns, starting with a descending eighth-note scale in the first measure, followed by more complex rhythmic figures.

5

Measures 5-8: Continuation of the eighth-note patterns from the previous system, showing a mix of eighth and sixteenth notes.

10

Measures 9-13: Continuation of the eighth-note patterns, with some rests and a change in the rhythmic density.

14

Measures 14-17: Continuation of the eighth-note patterns, maintaining the forte dynamic.

18

Measures 18-21: Continuation of the eighth-note patterns, with some chromatic movement.

22

Measures 22-27: Continuation of the eighth-note patterns, with a *sciolto* marking at the end of the system. The dynamic remains *f*.

28

Measures 28-32: Continuation of the eighth-note patterns, ending with a first ending bracket labeled "1.".

33

Measures 33-41: Continuation of the eighth-note patterns, with a second ending bracket labeled "2." and a *p* dynamic marking. A **4** (quadruple) marking is present above the staff.

42

Measures 42-46: Continuation of the eighth-note patterns, with a *cresc. f* marking indicating a crescendo to forte.

47

Measures 47-50: Continuation of the eighth-note patterns, ending with a *sciolto* marking.

53



57



61



66



70



Andante



7



12



17



22



27



Violoncello

4

32



36



40



46



52



59



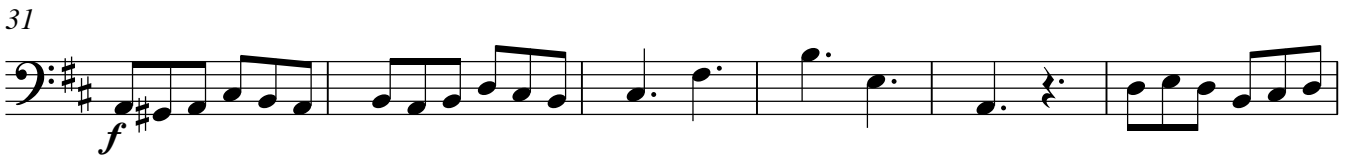
Allegro vivace



6



31



37



42



51



57



64



80



87



93



99



104



108

